

ROSSINI.

Your workwear since 1969



ESSENTIAL
COLLECTION

by **Giblor's**
italian worklife specialist



ROSSINI.

TECHNICAL SUPPLIER

Giblor's
italian work*life* specialist

ESSENTIAL
COLLECTION

4 ITALIAN FAMILIES' STORY

6 ÷ 45 **Chef Style**

8 GIACCHE CHEF / *CHEF'S JACKETS*

28 PANTALONI CHEF / *CHEF'S PANTS*

36 GREMBIULI CHEF / *CHEF'S APRONS*

40 ACCESSORI CHEF / *CHEF'S ACCESSORIES*

44 CALZATURE CHEF / *CHEF'S FOOTWEAR*

46 ÷ 117 **Ho.Re.Ca. & Service**

48 GREMBIULI / *APRONS*

84 ACCESSORI / *ACCESSORIES*

92 COMPLETI / *SUITS AND JACKETS*

96 GILET / *WAISTCOATS*

98 PANTALONI / *PANTS*

100 CAMICIE / *SHIRTS AND BLOUSES*

104 CAMICI / *COATS*

108 CASACCHE / *TUNICS*

118 ÷ 147 **Health&Wellness**

120 CAMICI / *APRONS*

124 CASACCHE E PANTALONI / *TUNICS AND PANTS*

148 TESSUTI, TAGLIE E LAVAGGI
FABRICS, SIZES AND WASHING SYMBOLS

154 INDICE ALFABETICO PRODOTTI
ALPHABETICAL INDEX OF PRODUCTS

ESSENTIAL
COLLECTION

Torna l'appuntamento con il magazine che ti porta alla scoperta del mondo GIBLOR'S



Interviste, approfondimenti e articoli per raccontare tutte le attività, le collaborazioni e le novità del momento.

GIBLOR'S
italian worklife specialist

Richiedi una copia al tuo rivenditore GIBLOR'S di fiducia oppure cercala su **GIBLORS.COM**

Italian families story

Le belle storie iniziano sempre con impegno e passione. Se poi l'entusiasmo viene condiviso con qualcuno che crede in un progetto e collabora per farlo crescere, il futuro offre ancora più prospettive.

La famiglia Giberti lo ha imparato molti anni fa, fin da quando i fratelli Roberto e Loris decisero di rilanciare la piccola azienda sartoriale fondata dai genitori.

Negli stessi anni, l'azienda Rossini cresceva su presupposti simili, grazie all'impegno di Marco e delle due sorelle Wilma e Tiziana.

Due famiglie diverse che, insieme, contano quasi 100 anni di esperienza, idee, aspirazioni e una visione imprenditoriale legata alle radici e alla tradizione familiare.

Valori comuni che, ora, hanno portato il marchio GIBLOR'S ad entrare a far parte del gruppo Rossini Trading S.p.A. con l'intento di alzare ancora di più gli standard qualitativi nel settore dell'abbigliamento professionale in Italia.

Un'acquisizione che lascia alla guida di GIBLOR'S il suo AD storico, Roberto Giberti, in linea con l'approccio che ha permesso all'azienda di crescere e distinguersi per impegno artigianale, stile sartoriale, qualità, tecnologia e attenzione al design.

Competenze e valori che, in modi diversi ma affini, Rossini e GIBLOR'S hanno intrecciato come i fili di un'unica trama e che, da oggi, diventano gli elementi di un progetto più grande e importante.

Una nuova storia condivisa, con l'obiettivo di dividere i compiti, moltiplicare il successo e affrontare con determinazione tutte le sfide del futuro.

Good stories always start with commitment and passion.

And if the enthusiasm is shared with someone who believes in a project and collaborates to make it grow, the future offers even more perspectives.

The Giberti family learned this many years ago, ever since the brothers Roberto and Loris decided to relaunch the small tailoring company founded by their parents.

In the same years, the Rossini company grew on similar assumptions, thanks to the commitment of Marco and the two sisters Wilma and Tiziana. Two different families that, together, have almost 100 years of experience, ideas, aspirations and an entrepreneurial vision linked to the roots and to the family tradition. Common values that, now, have led the GIBLOR'S brand to become part of the Rossini Trading S.p.A. group with the intention of raising even more the quality standards in the professional clothing sector in Italy. An acquisition that leaves its historic CEO, Roberto Giberti, at the helm of GIBLOR'S, in line with the approach that has allowed the company to grow and stand out for its craftsmanship, tailoring style, quality, technology and attention to design.

Skills and values that, in different but similar ways, Rossini and GIBLOR'S have intertwined like the threads of a single plot and which, from today, become the elements of a larger and more important project.

A new shared history, with the aim of dividing tasks, multiplying success and facing all the challenges of the future with determination.

GIBLOR'S

italian worklife specialist

è un'azienda del gruppo

ROSSINI.







La linea **Giblor's Essential** nasce per soddisfare una fascia di consumatori molto attenta all'equilibrio qualità prezzo, e si deve alla grande esperienza maturata dal brand in quasi cinquant'anni di attività.

I capi che troverete nella linea **Essential Chef & Ho.re.ca.** infatti mantengono gli standard che contraddistinguono da sempre gli articoli a marchio **Giblor's** e sono studiati per garantire un'ottima vestibilità e il massimo comfort durante le ore di lavoro.

La collezione si compone di giacche classiche con bottoni estraibili, ma ospita anche giacche in tessuto cotone stretch.

Grande spazio è riservato ai grembiuli, in un'ampissima gamma di colori, da quelli in poli-cotone a quelli in poliestere no stiro, tutti corredati dai propri accessori.

ESSENTIAL

COLLECTION

*The **Giblor's Essential** line was created to satisfy a range of consumers who are very attentive to the balance between quality and price, and is due to the great experience gained by the brand in almost fifty years of activity.*

*The garments that you will find in the **Essential Chef & Ho.re.ca.** line in fact maintain the standards that have always distinguished **Giblor's** branded items and are designed to ensure an excellent fit and maximum comfort during working hours.*

The collection consists of classic jackets with removable buttons, but also hosts jackets in stretch cotton fabric. Large space is reserved for aprons, in a very wide range of colors, from those in poly-cotton to those in non-iron polyester, all accompanied by their own accessories.

chef style

Giacche bottone a pressione
Press studs fastening jackets

AUGUSTIN

Dettagli / Details

- Bottoni a pressione
- Taschino portapenne sulla manica

- Press studs
- Pen pocket on sleeve

Taglie / Sizes

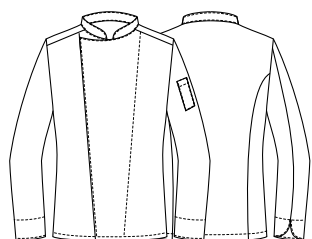
S ÷ 4XL Slim Fit

COD. Q8G00187

C01 Bianco / White
U32 Nero / Black

Tessuto / Fabric

97% cotone 3% elasthan
97% cotton 3% elastane
185 g / m²



COD. Q8G00187

U32 Nero / Black

COMFORT



COD. Q8G00187

C01 Bianco / White

COMFORT



COD. Q8G00188

U32 Nero / Black

chef style

Giacche bottone a pressione
Press studs fastening jackets

CELINE

Dettagli / Details

- Bottoni a pressione
- Taschino portapenne sulla manica

- Press studs
- Pen pocket on sleeve

Taglie / Sizes

XS ÷ XXXL Slim Fit

COD. Q8G00188

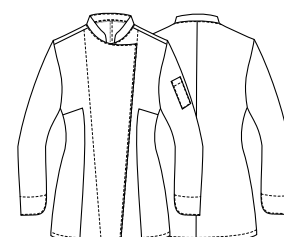
U32 Nero / Black
C01 Bianco / White

Tessuto / Fabric

97% cotone 3% elasthan
97% cotton 3% elastane
185 g / m²



COMFORT



COD. Q8G00188

C01 Bianco / White



COMFORT



COD. Q8GX0106

Art. 19P08G098
J32 Jeans nero / Black jeans

ULISSE

Dettagli / Details

- Bottoni a pressione
- Taschino sul petto
- Taschino portapenne sulla manica
- 2 spacchetti dietro
- Inserti in Alcantara
- Asola nel collo per inserire il laccio del grembiule
- Press studs
- Breast pocket
- Pen pocket on sleeve
- 2 side vents
- Alcantara panels
- Eyelet to insert apron's halter

Taglie / Sizes

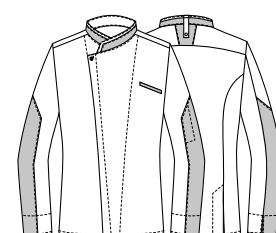
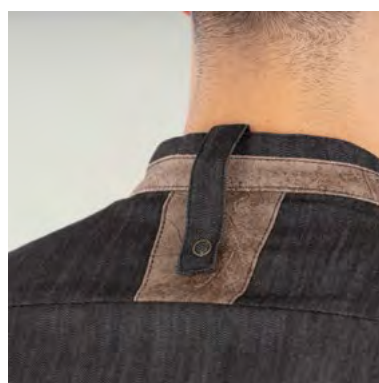
S ÷ 4XL Slim Fit

COD. Q8GX0106

Art. 19P08G098
J32 Jeans nero / Black jeans

Tessuto / Fabric

75% cotone 23% poliestere 2% elasthan
75% cotton 23% polyester 2% elastane
210 g / m²



chef style

Giacche bottone a pressione
Press studs fastening jackets

DIONISIO

Dettagli / Details

- Bottoni a pressione
- Taschino sul petto
- Taschino portapenne sulla manica
- Inserti in rete
- 2 spacchetti dietro
- Asola nel collo per inserire il laccio del grembiule
- Inserti in jeans

- *Press studs*
- *Breast pocket*
- *Pen pocket on sleeve*
- *Network fabric panels*
- *2 side vents*
- *Eyelet to insert apron's halter*
- *Jeans inserts*

Taglie / Sizes

S ÷ 4XL Slim Fit

COD. Q8GX0107

Art. 19P08G084
U32 Nero / Black

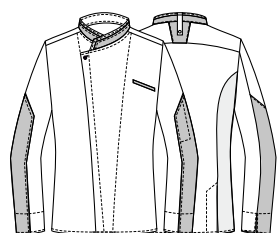
Tessuto / Fabric

50% lyocell 50% poliestere
50% lyocell 50% polyester
180 g / m²

Pantalone abbinabile
Matching pants

GIOVE

pag. 33





Tencel™
Feels so right



COD. Q8GX0107

Art. 19P08G084
U32 Nero / Black

chef style

Giacche bottone a pressione
Press studs fastening jackets

PATRIZIO

Dettagli / Details

- Bottoni a pressione
- Taschino sul petto
- Taschino portapenne sulla manica
- Inserti in rete
- Profilo grigio

- Press studs
- Breast pocket
- Pen pocket on sleeve
- Network fabric panels
- Grey piping

Taglie / Sizes

S ÷ 4XL Slim Fit

COD. Q8G00190

U32 Nero / Black

Tessuto / Fabric

65% poliestere 35% cotone
65% polyester 35% cotton
200 g / m²

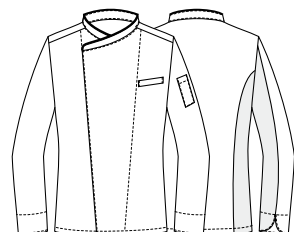
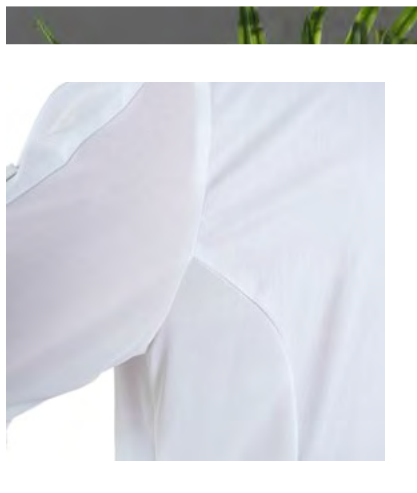


COD. Q8G00189

C01 Bianco / White

Tessuto / Fabric

100% cotone
100% cotton
185 g / m²



COD. Q8G00189

C01 Bianco / White



COD. Q8G00190

U32 Nero / Black

chef style

Giacche bottone a pressione
Press studs fastening jackets

SUSI

Dettagli / Details

- Bottoni a pressione
- Taschino sul petto
- Taschino portapenne sulla manica
- Inserti in rete
- Profilo grigio

- Press studs
- Breast pocket
- Pen pocket on sleeve
- Network fabric panels
- Grey piping

Taglie / Sizes

XS ÷ 3XL Slim Fit

COD. Q8G00191

C01 Bianco / White

Tessuto / Fabric

100% cotone
100% cotton
185 g / m²

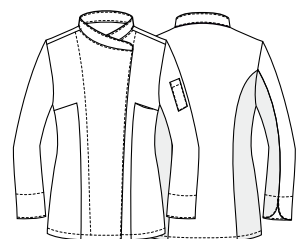


COD. Q8G00192

U32 Nero / Black

Tessuto / Fabric

65% poliestere 35% cotone
65% polyester 35% cotton
200 g / m²



COD. Q8G00192

U32 Nero / Black



COD. Q8G00191

C01 Bianco / White

chef style

Giacche bottone a pressione
Press studs fastening jackets

PATRIZIO

Dettagli / Details

- Bottoni a pressione
- Taschino sul petto
- Taschino portapenne sulla manica
- Inserti in rete
- Profilo tricolore italiano

- *Press studs*
- *Breast pocket*
- *Pen pocket on sleeve*
- *Network fabric panels*
- *Italian flag piping*

Taglie / Sizes

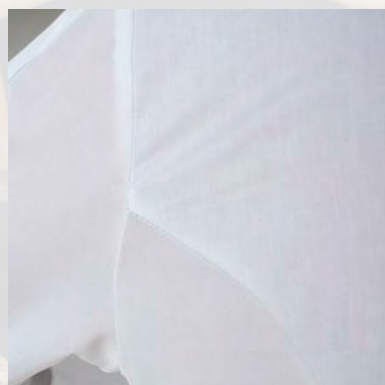
S ÷ 4XL Slim Fit

COD. Q8G00189

P50 ITA / ITA

Tessuto / Fabric

100% cotone
100% cotton
185 g / m²



chef style

Giacche bottone a pressione
Press studs fastening jackets

SUSI

Dettagli / Details

- Bottoni a pressione
- Taschino sul petto
- Taschino portapenne sulla manica
- Inserti in rete
- Profilo tricolore italiano

- Press studs
- Breast pocket
- Pen pocket on sleeve
- Network fabric panels
- Italian flag piping

Taglie / Sizes

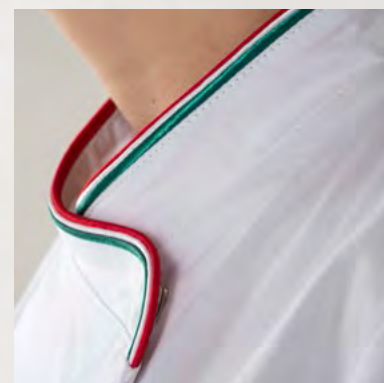
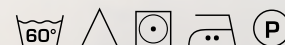
XS ÷ 3XL Slim Fit

COD. Q8G00191

P50 ITA / ITA

Tessuto / Fabric

100% cotone
100% cotton
185 g / m²



chef style

Giacche bottone a pressione
Press studs fastening jackets

RAUL

Dettagli / Details

- Bottoni a pressione
- Taschino sul petto
- Taschino portapenne sulla manica
- Rete sulla schiena

- *Press studs*
- *Breast pocket*
- *Pen pocket on sleeve*
- *Network fabric on the back*

COD. Q8GX0104

Art. 22P08G322
C01 Bianco / *White*

Taglie / Sizes

S ÷ 4XL Slim Fit

Tessuto / Fabric

100% cotone / *cotton*
185 g / m²

COD. Q8GX0105

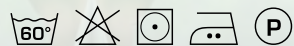
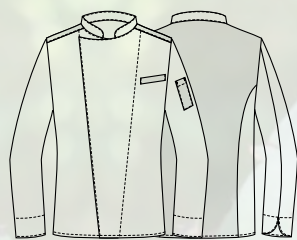
Art. 22P08G323
U35 Bordeaux / *Burgundy*
U32 Nero / *Black*
Z41 Tortora / *Taupe*
Z48 Blu / *Blue*
Z44 Marrone / *Brown*
C02 Grigio / *Grey*
Z43 Verde militare / *Military green*

Taglie / Sizes

S ÷ 4XL Slim Fit

Tessuto / Fabric

65% poliestere 35% cotone
65% *polyester* 35% *cotton*
200 g / m²



COD. Q8GX0105

Art. 22P08G323
019 Grigio chiaro / *Light grey*



COD. Q8GX0104

Art. 22P08G322
C01 Bianco / White



COD. Q8GX0105

Art. 22P08G323
U35 Bordeaux / Burgundy



COD. Q8GX0105

Art. 22P08G323
U32 Nero / Black



COD. Q8GX0105

Art. 22P08G323
Z41 Tortora / Taupe



COD. Q8GX0105

Art. 22P08G323
Z48 Blu / Blue



COD. Q8GX0105

Art. 22P08G323
Z44 Marrone / Brown



COD. Q8GX0105

Art. 22P08G323
C02 Grigio / Grey



COD. Q8GX0105

Art. 22P08G323
Z43 Verde militare / Military green

chef style

Giacche bottone a pressione
Press studs fastening jackets

THIAGO

Dettagli / Details

- Bottoni a pressione
- Taschino sul petto - Rete sulla schiena

- Press studs - Breast pocket
- Network fabric on the back

COD. Q8GX0103

Art. 22P08G640
Z41 Tortora / Taupe
Z48 Blu / Blue
U35 Bordeaux / Burgundy
Z44 Marrone / Brown
Z43 Verde militare / Military green

Taglie / Sizes

S ÷ 4XL Slim Fit

Tessuto / Fabric

65% poliestere 35% cotone
65% polyester 35% cotton
200 g / m²

COD. Q8GX0102

Art. 19P08G640
C02 Grigio / Grey

Taglie / Sizes

S ÷ 4XL Slim Fit

Tessuto / Fabric

65% poliestere 35% cotone
65% polyester 35% cotton
200 g / m²

COD. Q8GX0101

Art. 15P08G640
U32 Nero / Black

Taglie / Sizes

S ÷ 5XL Slim Fit

Tessuto / Fabric

65% poliestere 35% cotone
65% polyester 35% cotton
200 g / m²

COD. Q8GX0100

Art. 15P08G641
C01 Bianco / White

Taglie / Sizes

S ÷ 5XL Slim Fit

Tessuto / Fabric

100% cotone / cotton
185 g / m²



COD. Q8GX0103

Art. 22P08G640
004 Blu / Blue



COD. Q8GX0103

Art. 22P08G640
Z41 Tortora / Taupe



COD. Q8GX0103

Art. 22P08G640
U35 Bordeaux / Burgundy



COD. Q8GX0103

Art. 22P08G640
Z44 Marrone / Brown



COD. Q8GX0103

Art. 22P08G640
Z48 Blu / Blue



COD. Q8GX0103

Art. 22P08G640
Z43 Verde militare / Military green



COD. Q8GX0102

Art. 19P08G640
C02 Grigio / Grey



COD. Q8GX0101

Art. 15P08G640
U32 Nero / Black



COD. Q8GX0100

Art. 15P08G641
C01 Bianco / White



chef style

Giacche bottone estraibile
Removable buttons jackets

ADRIANO

Dettagli / Details

- Bottoni estraibili
- Taschino portapenne sulla manica

- Removable buttons
- Pen pocket on sleeve

Taglie / Sizes

XS ÷ 5XL Slim Fit

COD. Q8G00183

C01 Bianco / White

Tessuto / Fabric

100% cotone
100% cotton
185 g / m²

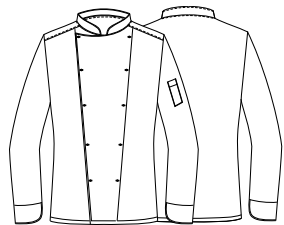
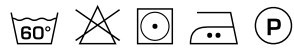


COD. Q8G00184

U32 Nero / Black

Tessuto / Fabric

65% poliestere 35% cotone
65% polyester 35% cotton
200 g / m²



COD. Q8G00184

U32 Nero / Black

COD. Q8G00183

C01 Bianco / White

TOMMASO

Dettagli / Details

- Bottoni estraibili
- Taschino portapenne sulla manica

- Removable buttons
- Pen pocket on sleeve

Taglie / Sizes

XS ÷ 5XL Slim Fit

COD. Q8G00185

C01 Bianco / White

Tessuto / Fabric

100% cotone
100% cotton
185 g / m²

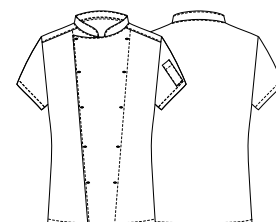


COD. Q8G00186

U32 Nero / Black

Tessuto / Fabric

65% poliestere 35% cotone
65% polyester 35% cotton
200 g / m²



COD. Q8G00185

C01 Bianco / White

COD. Q8G00186

U32 Nero / Black

chef style

Pantaloni
Pants

PLUTONE

Dettagli / Details

- 2 tasche
- 1 tasca sul retro
- Elastico e coulisse

- 2 pockets
- 1 rear pocket
- Elasticated waistband with drawstring

Taglie / Sizes

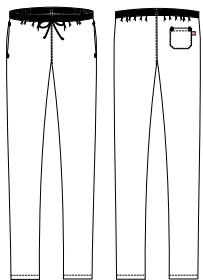
XS ÷ 5XL Slim Fit

COD. Q8P00194

U32 Nero / Black

Tessuto / Fabric

65% poliestere 35% cotone
65% polyester 35% cotton
200 g / m²





PLUTONE

Dettagli / Details

- 2 tasche
- 1 tasca sul retro
- Elastico e coulisse

- 2 pockets
- 1 rear pocket
- Elasticated waistband with drawstring

Taglie / Sizes

XS ÷ 5XL Slim Fit

COD. Q8P00195

Q32 - Quadro nero / Black check

Tessuto / Fabric

100% cotone
100% cotton
200 g / m²

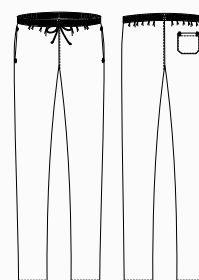


COD. Q8P00193

C01 Bianco / White

Tessuto / Fabric

100% cotone
100% cotton
185 g / m²



chef style

Pantaloni
Pants



ENRICO

Dettagli / Details

- 2 tasche
- 1 tasca sul retro
- Elastico e coulisse
- Chiusura zip

- 2 pockets
- 1 rear pocket
- Elasticated waistband with drawstring
- Zip fly

Taglie / Sizes

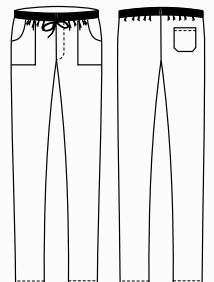
XS ÷ 5XL Regular Fit

COD. Q8PX0108

Art. 11P08P20
G32 Gessato nero / Black
G12 Gessato grigio / Grey

Tessuto / Fabric

70% cotone 30% poliestere
70% cotton 30% polyester
145 g / m²





ENRICO

Dettagli / Details

- 2 tasche
- 1 tasca sul retro
- Elastico e coulisse
- Chiusura zip

- 2 pockets
- 1 rear pocket
- Elasticated waistband with drawstring
- Zip fly

Taglie / Sizes

XS ÷ 5XL Regular Fit

COD. Q8PX0108

Art. 11P08P20

G48 Gessato blu / Blue

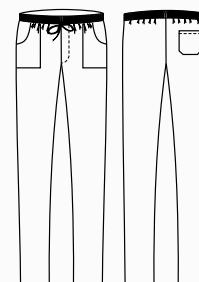
G35 Gessato bordeaux / Burgundy

Tessuto / Fabric

70% cotone 30% poliestere

70% cotton 30% polyester

145 g / m²





ENRICO

Dettagli / Details

- 2 tasche
- 1 tasca sul retro
- Elastico e coulisse in vita
- Chiusura zip

- 2 pockets
- 1 rear pocket
- Elasticated waistband with drawstring
- Zip fly

Taglie / Sizes

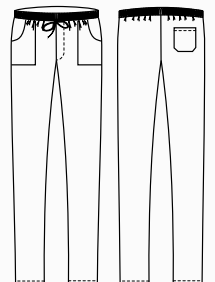
XS ÷ 5XL Regular Fit

COD. Q8PX0109

Art. 19P08P20
R32 Rigato nero / *Striped black*
R12 Rigato grigio / *Striped grey*

Tessuto / Fabric

100% cotone
100% cotton
140 g / m²





GIOVE

Dettagli / Details

- 2 tasche
- 2 tasche sul retro
- Elastico in vita
- 1 bottone
- Chiusura zip
- Passanti cintura
- Inserto in rete traspirante

- 2 pockets
- 2 rear pockets
- Elasticated waistband
- 1 button
- Zip fly
- Belt loops
- Network fabric panel

Taglie / Sizes

XS ÷ 4XL Slim Fit

COD. Q8PX0114

Art. 19P08P109

J32 Jeans nero / *Black jeans*

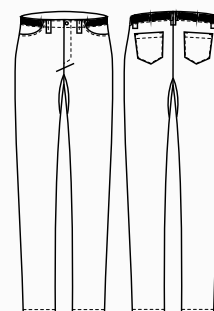
J02 Jeans grigio / *Grey jeans*

Tessuto / Fabric

75% cotone 23% poliestere 2% elastan

75% cotton 23% polyester 2% elastane

210 g / m²



chef style

Pantaloni

Pants

BRUCE

Dettagli / Details

- 2 tasche - Rete all over
- Elastico e coulisse

- 2 pockets - Network fabric all over
- Elasticated waistband with drawstring

Taglie / Sizes

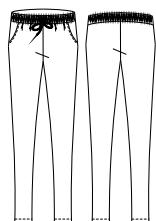
XS ÷ 4XL Slim Fit

COD. Q8PX0115

Art. 20P08P186
U32 Nero / Black

Tessuto / Fabric

100% poliestere / polyester
160 g / m²



COD. Q8PX0115

Art. 20P08P186
U32 Nero / Black



COD. Q8PX0110

Art. 20P08P185
U32 Nero / Black



NOAH

Dettagli / Details

- 2 tasche - 1 tasca sul retro
- Elastico e coulisse

- 2 pockets - 1 rear pocket
- Elasticated waistband with drawstring

COD. Q8PX0110

Art. 20P08P185
U32 Nero / Black

Tessuto / Fabric

62% cotone 35% poliestere 3% elasthan
62% cotton 35% polyester 3% elastane
180 g / m²

Taglie / Sizes

XS ÷ 4XL Slim Fit

COD. Q8PX0111

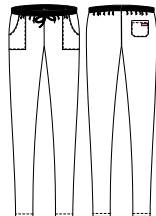
Art. 20P08P184
Z41 Tortora / Toupe
M12 Grigio / Grey

Tessuto / Fabric

65% poliestere 35% cotone
65% polyester 35% cotton
115 g / m²

Taglie / Sizes

S ÷ 4XL Slim Fit



ULTRA
LIGHT

COD. Q8PX0111

Art. 20P08P184
Z41 Tortora / Toupe



ULTRA
LIGHT

COD. Q8PX0111

Art. 20P08P184
M12 Grigio / Grey





ALAN

Dettagli / Details

- 2 tasche
- 1 tasca sul retro
- Elastico e coulisse

- 2 pockets
- 1 rear pocket
- Elasticated waistband with drawstring

Taglie / Sizes

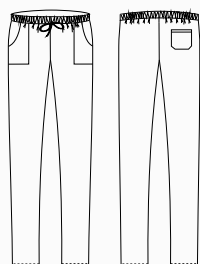
XS ÷ XXXL Slim Fit

COD. Q8PX012

Art. 14P08P477
F05 Menu nero / Black menu

Tessuto / Fabric

100% cotone / cotton
168 g / m²



ATENE

Dettagli / Details

- 2 tasche - 1 tasca sul retro
- Elastico e coulisse
- Chiusura zip

- 2 pockets - 1 rear pocket
- Elasticated waistband with drawstring
- Zip fly

Taglie / Sizes

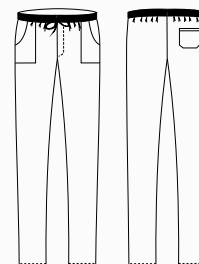
XS ÷ 4XL Regular Fit

COD. Q8PX013

Art. 10M1532
F04 Peperoncino / Chili

Tessuto / Fabric

100% cotone / cotton
168 g / m²



chef style

Grembiuli
Aprons



PARIGI

Dettagli / Details

- Stampato
- 1 tasca

- Printed fabric
- 1 pocket

Taglie / Sizes

Taglia unica / One size

Misure / Dimensions

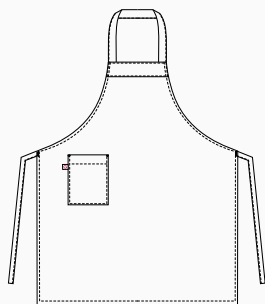
90x70 cm

COD. Q8HX0120

Art. 19P08H478
F14 Travel / Travel

Tessuto / Fabric

100% cotone / cotton
168 g / m²



ZAGABRIA

Dettagli / Details

- Stampato
- 1 tasca

- Printed fabric
- 1 pocket

Taglie / Sizes

Taglia unica / One size

Misure / Dimensions

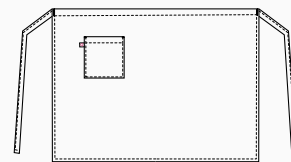
70x70 cm

COD. Q8HX0121

Art. 19P08H480
F14 Travel / Travel

Tessuto / Fabric

100% cotone / cotton
168 g / m²





PARIGI

Dettagli / Details

- Stampato - 1 tasca
- Printed fabric - 1 pocket

Misure / Dimensions 90x70 cm

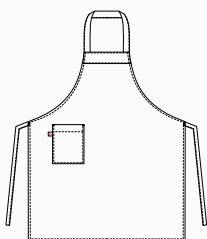
Taglie / Sizes Taglia unica / One size

COD. Q8HX0117

Art. 14P08H478
F05 Menu nero / Black menu

Tessuto / Fabric

100% cotone / cotton - 168 g / m²



ZAGABRIA

Dettagli / Details

- Stampato - 1 tasca
- Printed fabric - 1 pocket

Misure / Dimensions 70x70 cm

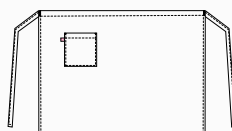
Taglie / Sizes Taglia unica / One size

COD. Q8HX0118

Art. 14P08H480
F05 Menu nero / Black menu

Tessuto / Fabric

100% cotone / cotton - 168 g / m²



LONDON

Dettagli / Details

- Scamiciato - Coperto dietro
- 1 grande tasca
- Pinafore - Covered backside
- 1 big pocket

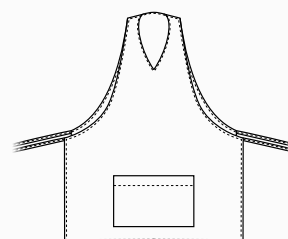
Taglie / Sizes Taglia unica / One size

COD. Q8HX0119

Art. 14P08H479
F05 Menu nero / Black menu

Tessuto / Fabric

100% cotone / cotton - 168 g / m²



chef style

Grembiuli

Aprons

GIUNONE

Dettagli / Details

- Baschina per nascondere il laccio
- *Basque to hide the string*

Taglie / Sizes

Taglia unica / One size

Misure / Dimensions 90x100 cm

COD. Q8H00196

C01 Bianco / White
P50 ITA / ITA

Tessuto / Fabric

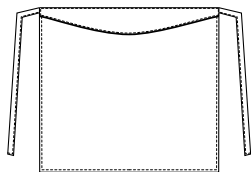
100% cotone
100% cotton
185 g / m²

COD. Q8H00197

U32 Nero / Black

Tessuto / Fabric

65% poliestere 35% cotone
65% polyester 35% cotton
200 g / m²



COD. Q8H00196

C01 Bianco / White



COD. Q8H00196

P50 ITA / ITA



OMERO

Dettagli / Details

- 1 portapenne
- 1 pen pocket

Taglie / Sizes Taglia unica / One size

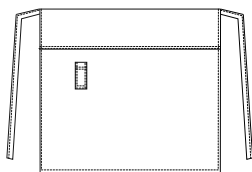
Misure / Dimensions 90x90 cm

COD. Q8HX0116

Art. 19P08H108
J32 Jeans nero / Black jeans

Tessuto / Fabric

75% cotone 23% poliestere 2% elastan
75% cotton 23% polyester 2% elastane
210 g / m²



COD. Q8H00197

U32 Nero / Black



COD. Q8HX0116

Art. 19P08H108
J32 Jeans nero / Black jeans





COD. Q8H00201

U32 Nero / Black

65% poliestere 35% cotone
65% polyester 35% cotton
200 g / m²



COD. Q8H00200

C01 Bianco / White

100% cotone
100% cotton
185 g / m²



ANCONA

Dettagli / Details

- 1 tasca

- 1 pocket

Taglie / Sizes Taglia unica / One size

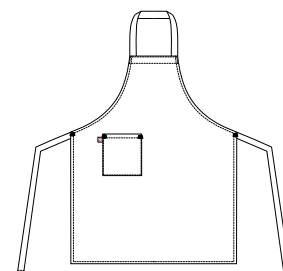
Misure / Dimensions 100x73 cm

COD. Q8H00201

U32 Nero / Black

COD. Q8H00200

C01 Bianco / White



MATERA

Dettagli / Details

- 1 tasca

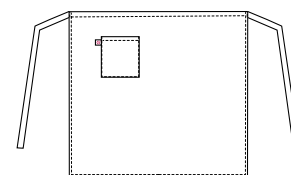
- 1 pocket

Taglie / Sizes Taglia unica / One size

Misure / Dimensions 75x105 cm

COD. Q8H00199

C01 Bianco / White



COD. Q8H00199

C01 Bianco / White

100% cotone
100% cotton
185 g / m²



COD. Q8H00198

C01 Bianco / White

100% cotone
100% cotton
185 g / m²



BARI

Dettagli / Details

- 1 tasca

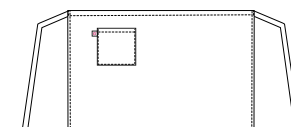
- 1 pocket

Taglie / Sizes Taglia unica / One size

Misure / Dimensions 45x80 cm

COD. Q8H00198

C01 Bianco / White



accessori

Toque

Toque

KLIMT

Dettagli / Details

- Regolabile con elastico
- Adjustable with elastic

Taglie / Sizes

Taglia unica / One size

COD. Q5100203

C01 Bianco / White
P50 ITA / ITA

Tessuto / Fabric

100% cotone / cotton
185 g / m²

COD. Q5100204

U32 Nero / Black

Tessuto / Fabric

65% poliestere 35% cotone
65% polyester 35% cotton
200 g / m²

CAPPELLO SCUOLA

Taglie / Sizes

Taglia unica / One size

COD. Q5100202

C01 Bianco / White

Tessuto / Fabric

100% cotone / cotton
185 g / m²



COD. Q51X0217

Art. 10M416
F04 Peperoncino / Chili



COD. Q51X0122

Art. 14P051483
F05 Menu nero / Black menu



COD. Q5100206

U32 Nero / Black



COD. Q5100205

C01 Bianco / White



COD. Q5100203

C01 Bianco / White



COD. Q5100203

P50 ITA / ITA



COD. Q5100202

C01 Bianco / White



TOQUE

Taglie / Sizes

Taglia unica / One size

COD. Q51X0217

Art. 10M416

COD. Q51X0122

Art. 14P051483

Tessuto / Fabric

100% cotone / cotton
168 g / m²

MONET

Taglie / Sizes

Taglia unica / One size

COD. Q5100205

C01 Bianco / White

Tessuto / Fabric

100% cotone / cotton
185 g / m²

COD. Q5100206

U32 Nero / Black

Tessuto / Fabric

65% poliestere 35% cotone
65% polyester 35% cotton
185 g / m²

COPRICAPO

Taglie / Sizes
Taglia unica / One size



COD. R051

Bianco / White



COD. R001

Bianco / White



COD. R051

Bianco / White

Tessuto 1 / Fabric 1
100% cotone / cotton

Tessuto 2 / Fabric 2
Rete 100% poliestere
Network fabric 100% polyester

COD. R001

Bianco / White

Tessuto 1 / Fabric 1
100% cotone / cotton

Tessuto 2 / Fabric 2
Rete 100% poliestere
Network fabric 100% polyester



COD. R100



COD. R100



COD. R100

COD. R100: venduto in confezioni da 12 pezzi. Articolo aleatorio: non è possibile scegliere l'assortimento colore.
COD. R100: 12 pieces pack. Random color: the choice of the color is not allowed.



TORCIONE

Misure / Dimensions
56X80 cm

COD. R100

Colori assortiti / Assorted colors

Tessuto / Fabric
100% cotone / cotton

ANDY TRIANGOLO CUOCO

COD. Q5100265

C01 Bianco / White

Misure / Dimensions
67,5X67,5 cm

Tessuto / Fabric
100% cotone / cotton
185 g / m²



COD. Q5100265

C01 Bianco / White



COD. Q5100266

U32 Nero / Black



COD. Q5100266

U32 Nero / Black

Misure / Dimensions
67,5X67,5 cm

Tessuto / Fabric
65% poliestere 35% cotone
65% polyester 35% cotton
200 g / m²



COD. R140

Bianco / White



COD. R140

Bianco / White

Misure / Dimensions
90X90 cm

Tessuto / Fabric
100% cotone / cotton
140 g / m²

accessori

Bandana
Bandana

BANDANA

Dettagli / Details

- Con fascia tergisudore
- With sweeper band

Taglie / Sizes

Taglia unica / One size

***COD. Q5IX0126**

Art. 19P051865
U35 Bordeaux / Burgundy



***COD. Q5IX0126**

*Art. 19P051865
U35 Bordeaux / Burgundy



***COD. Q5IX0125**

*Art. 22P051865
Z48 Blu / Blue



***COD. Q5IX0125**

*Art. 22P051865
Z44 Marrone / Brown



***COD. Q5IX0125**

Art. 22P051865
Z48 Blu / Blue
Z44 Marrone / Brown

***COD. Q5IX0124**

Art. 20P051865
Z41 Tortora / Toupe
Z43 Verde militare / Military green



***COD. Q5IX0124**

*Art. 20P051865
Z41 Tortora / Toupe



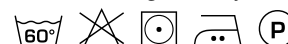
***COD. Q5IX0124**

*Art. 20P051865
Z43 Verde militare / Military green



***COD. Q5IX0123**

*Art. 17P051865
C02 Grigio / Grey



***COD. Q5IX0123**

Art. 17P051865
C02 Grigio / Grey

Tessuto / Fabric

65% poliestere 35% cotone
65% polyester 35% cotton
200 g / m²

***COD. Q5IX0128**

Art. 10M443
F04 Peperoncino / Chili



***COD. Q5IX0127**

Art. 14P051481
F05 Menu nero / Black menu



***COD. Q5IX0128**

*Art. 10M443
F04 Peperoncino / Chili



***COD. Q5IX0127**

*Art. 14P051481
F05 Menu nero / Black menu



COD. Q5I00263

U32 Nero / Black
C01 Bianco / White

Tessuto / Fabric

65% poliestere 35% cotone
65% polyester 35% cotton
143 g / m²



COD. Q5I00263

U32 Nero / Black



COD. Q5I00263

C01 Bianco / White



***CON FASCIA TERGISUDORE**
***WITH SWEEPER BAND**



***COD. Q5IX0123**

Art. 17P05I865
C02 Grigio / Grey

STELVIO CALZATURA ALIMENTARE

Tomaia / Upper

- Microfibra idrorepellente
- Puntale in composito

- *Water repellent microfiber*
- *Composite toe cap*

COD. SSVL114

Taglie / Sizes

36 ÷ 47

CE **Certificazione CE / CE Certification**
EN 20345 S2 SRC



Bianco / White

MINORCA SABOT

Tomaia / Upper

- Fibertex
- Puntale in composito

- *Fibertex*
- *Composite toe cap*

COD. SSEX115

Taglie / Sizes

35 ÷ 48

CE **Certificazione CE / CE Certification**
EN20345 SB E A SRC



Bianco / White

LANZAROTE SABOT

Tomaia / Upper

- Fibertex
- Puntale in composito

- *Fibertex*
- *Composite toe cap*

COD. SSEX116

Taglie / Sizes

35 ÷ 48

CE **Certificazione CE / CE Certification**
EN 20345 SB E A SRC



Nero / Black



CE Certificazione CE / CE Certification
EN 20347 E A FO SRA

ZOCCOLO POLIURETANO

Tomaia / Upper

- Pelle traforata traspirante
- Breathable perforated leather

COD. SSZ0005

(DONNA/WOMAN)

Taglie / Sizes
35 ÷ 40

COD. SSZ0006

(UOMO/MAN)

Taglie / Sizes
41 ÷ 46



CE Certificazione CE / CE Certification
EN 20347 E A FO SRA

ZOCCOLO POLIURETANO CON LACCETTO

Tomaia / Upper

- Pelle traforata traspirante
- Breathable perforated leather

COD. SSZ0007

(DONNA/WOMAN)

Taglie / Sizes
35 ÷ 40

COD. SSZ0008

(UOMO/MAN)

Taglie / Sizes
41 ÷ 46



Grembiule
LIONE
pag. 49

Grembiule
SCOTLAND
pag. 49





NAPOLI

Dettagli / Details

- 1 tasca

- 1 pocket

Taglie / Sizes

Taglia unica / One size

Misure / Dimensions

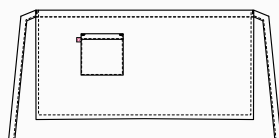
43x70 cm

COD. Q1HX0129

Art. 20P01H147
D21 Beige / Beige

Tessuto / Fabric

100% poliestere / polyester
170 g / m²



RENO

Dettagli / Details

- 2 tasche - 1 taschino portapenne
- Allacciatura collo regolabile con bottoni

- 2 pockets - 1 pen pocket

- Adjustable halter with buttons

Taglie / Sizes

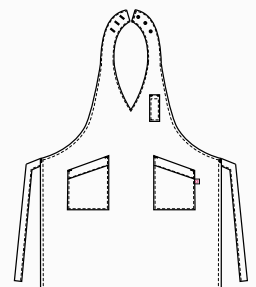
Taglia unica / One size

COD. Q1HX0130

Art. 20P01H158
D21 Beige / Beige

Tessuto / Fabric

100% poliestere / polyester
170 g / m²





LIONE

Dettagli / Details

- 1 tasca

- 1 pocket

Taglie / Sizes

Taglia unica / One size

Misure / Dimensions

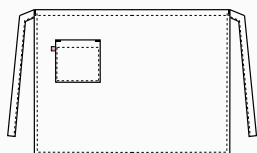
70x98 cm

COD. Q1HX0131

Art. 20P01H159
D21 Beige / Beige

Tessuto / Fabric

100% poliestere / polyester
170 g / m²



SCOTLAND

Dettagli / Details

- 1 grande tasca - 1 taschino portapenne
- Allacciatura collo regolabile con bottoni

- 1 big pocket - 1 pen pocket
- Adjustable halter with buttons

Taglie / Sizes

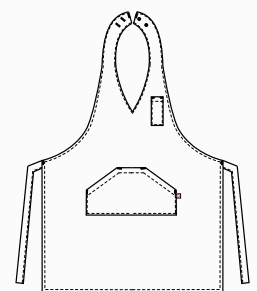
Taglia unica / One size

COD. Q1HX0132

Art. 20P01H2055
D21 Beige / Beige

Tessuto / Fabric

100% poliestere / polyester
170 g / m²





NAPOLI

Dettagli / Details

- 1 tasca

- 1 pocket

Taglie / Sizes

Taglia unica / One size

Misure / Dimensions

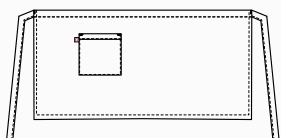
43x70 cm

COD. Q1HX0129

Art. 20P01H147
C02 Grigio / Grey

Tessuto / Fabric

100% poliestere / polyester
170 g / m²



RENO

Dettagli / Details

- 2 tasche - 1 taschino portapenne
- Allacciatura collo regolabile con bottoni

- 2 pockets - 1 pen pocket

- Adjustable halter with buttons

Taglie / Sizes

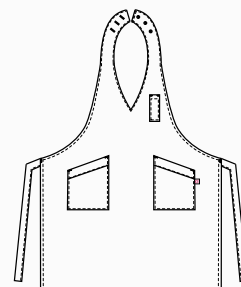
Taglia unica / One size

COD. Q1HX0130

Art. 20P01H158
C02 Grigio / Grey

Tessuto / Fabric

100% poliestere / polyester
170 g / m²





LIONE

Dettagli / Details

- 1 tasca

- 1 pocket

Taglie / Sizes

Taglia unica / One size

Misure / Dimensions

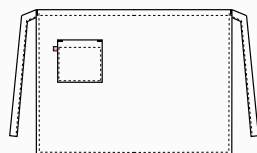
70x98 cm

COD. Q1HX0131

Art. 20P01H159
C02 Grigio / Grey

Tessuto / Fabric

100% poliestere / polyester
170 g / m²



SCOTLAND

Dettagli / Details

- 1 grande tasca - 1 taschino portapenne
- Allacciatura collo regolabile con bottoni

- 1 big pocket - 1 pen pocket
- Adjustable halter with buttons

Taglie / Sizes

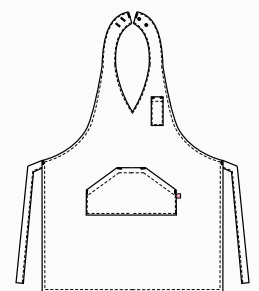
Taglia unica / One size

COD. Q1HX0132

Art. 20P01H2055
C02 Grigio / Grey

Tessuto / Fabric

100% poliestere / polyester
170 g / m²





NAPOLI

Dettagli / Details

- 1 tasca

- 1 pocket

Taglie / Sizes

Taglia unica / One size

Misure / Dimensions

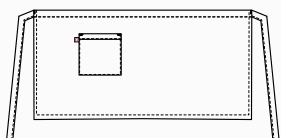
43x70 cm

COD. Q1HX0129

Art. 20P01H147
Z44 Marrone / Brown

Tessuto / Fabric

100% poliestere / polyester
170 g / m²



RENO

Dettagli / Details

- 2 tasche - 1 taschino portapenne
- Allacciatura collo regolabile con bottoni

- 2 pockets - 1 pen pocket

- Adjustable halter with buttons

Taglie / Sizes

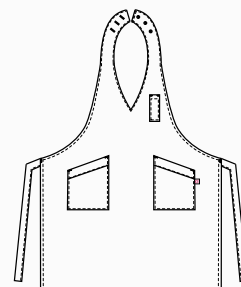
Taglia unica / One size

COD. Q1HX0130

Art. 20P01H158
Z44 Marrone / Brown

Tessuto / Fabric

100% poliestere / polyester
170 g / m²





LIONE

Dettagli / Details

- 1 tasca

- 1 pocket

Taglie / Sizes

Taglia unica / One size

Misure / Dimensions

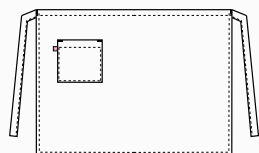
70x98 cm

COD. Q1HX0131

Art. 20P01H159
Z44 Marrone / Brown

Tessuto / Fabric

100% poliestere / polyester
170 g / m²



SCOTLAND

Dettagli / Details

- 1 grande tasca - 1 taschino portapenne
- Allacciatura collo regolabile con bottoni

- 1 big pocket - 1 pen pocket
- Adjustable halter with buttons

Taglie / Sizes

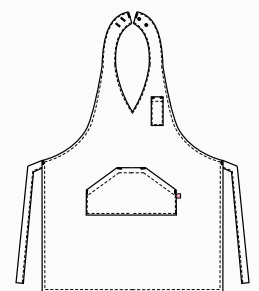
Taglia unica / One size

COD. Q1HX0132

Art. 20P01H2055
Z44 Marrone / Brown

Tessuto / Fabric

100% poliestere / polyester
170 g / m²





Grembiule
SENA
pag. 57

Grembiule
RODANO
pag. 57



Giblor's
italian worklife specialist



NAPOLI

Dettagli / Details

- 1 tasca

- 1 pocket

Taglie / Sizes

Taglia unica / One size

Misure / Dimensions

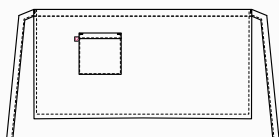
43x70 cm

COD. Q1HX0133

Art. 20P01H423
G12 Gessato grigio / Grey pinstripe

Tessuto / Fabric

99% poliestere 1% viscosa
99% polyester 1% viscose
170 g / m²



RENO

Dettagli / Details

- 2 tasche - 1 taschino portapenne
- Allacciatura collo regolabile con bottoni

- 2 pockets - 1 pen pocket
- Adjustable halter with buttons

Taglie / Sizes

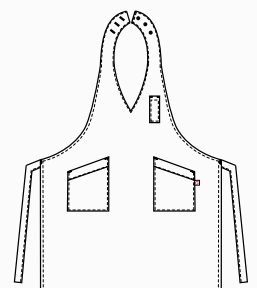
Taglia unica / One size

COD. Q1HX0134

Art. 20P01H152
G12 Gessato grigio / Grey pinstripe

Tessuto / Fabric

99% poliestere 1% viscosa
99% polyester 1% viscose
170 g / m²





SENNA

Dettagli / Details

- 2 tasche
- Allacciatura collo regolabile con bottoni

- 2 pockets
- Adjustable halter with buttons

Taglie / Sizes

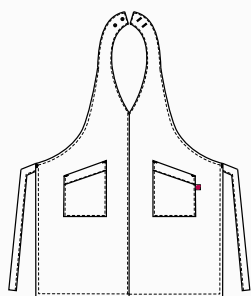
Taglia unica / One size

COD. Q1HX0135

Art. 20P01H153
G12 Gessato grigio / Grey pinstripe

Tessuto / Fabric

99% poliestere 1% viscosa
99% polyester 1% viscose
170 g / m²



RODANO

Dettagli / Details

- 1 tasca

- 1 pocket

Taglie / Sizes

Taglia unica / One size

Misure / Dimensions

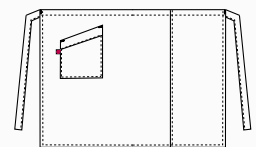
70x98 cm

COD. Q1HX0136

Art. 20P01H154
G12 Gessato grigio / Grey pinstripe

Tessuto / Fabric

99% poliestere 1% viscosa
99% polyester 1% viscose
170 g / m²





NAPOLI

Dettagli / Details

- 1 tasca

- 1 pocket

Taglie / Sizes

Taglia unica / One size

Misure / Dimensions

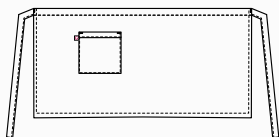
43x70 cm

COD. Q1HX0133

Art. 20P01H423
G32 Gessato nero / Black pinstripe

Tessuto / Fabric

99% poliestere 1% viscosa
99% polyester 1% viscose
170 g / m²



RENO

Dettagli / Details

- 2 tasche - 1 taschino portapenne
- Allacciatura collo regolabile con bottoni

- 2 pockets - 1 pen pocket
- Adjustable halter with buttons

Taglie / Sizes

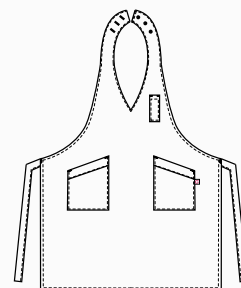
Taglia unica / One size

COD. Q1HX0134

Art. 20P01H152
G32 Gessato nero / Black pinstripe

Tessuto / Fabric

99% poliestere 1% viscosa
99% polyester 1% viscose
170 g / m²





SENNA

Dettagli / Details

- 2 tasche
- Allacciatura collo regolabile con bottoni

- 2 pockets
- Adjustable halter with buttons

Taglie / Sizes

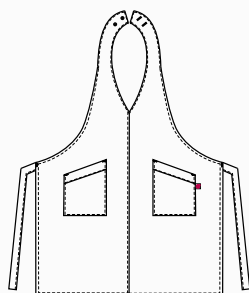
Taglia unica / One size

COD. Q1HX0135

Art. 20P01H153
G32 Gessato nero / Black pinstripe

Tessuto / Fabric

99% poliestere 1% viscosa
99% polyester 1% viscose
170 g / m²



RODANO

Dettagli / Details

- 1 tasca

- 1 pocket

Taglie / Sizes

Taglia unica / One size

Misure / Dimensions

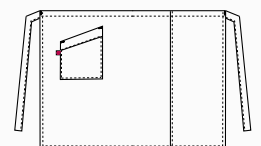
70x98 cm

COD. Q1HX0136

Art. 20P01H154
G32 Gessato nero / Black pinstripe

Tessuto / Fabric

99% poliestere 1% viscosa
99% polyester 1% viscose
170 g / m²





NAPOLI

Dettagli / Details

- 1 tasca

- 1 pocket

Taglie / Sizes

Taglia unica / One size

Misure / Dimensions

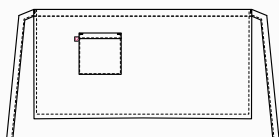
43x70 cm

COD. Q1HX0133

Art. 20P01H423
G35 Gessato bordeaux
G35 Burgundy pinstripes

Tessuto / Fabric

99% poliestere 1% viscosa
99% polyester 1% viscose
170 g / m²



RENO

Dettagli / Details

- 2 tasche - 1 taschino portapenne
- Allacciatura collo regolabile con bottoni

- 2 pockets - 1 pen pocket
- Adjustable halter with buttons

Taglie / Sizes

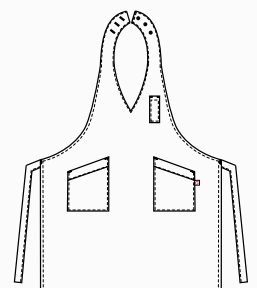
Taglia unica / One size

COD. Q1HX0134

Art. 20P01H152
G35 Gessato bordeaux
G35 Burgundy pinstripes

Tessuto / Fabric

99% poliestere 1% viscosa
99% polyester 1% viscose
170 g / m²





SENNA

Dettagli / Details

- 2 tasche
- Allacciatura collo regolabile con bottoni

- 2 pockets
- Adjustable halter with buttons

Taglie / Sizes

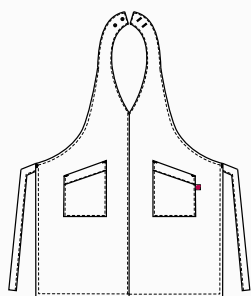
Taglia unica / One size

COD. Q1HX0135

Art. 20P01H153
G35 Gessato bordeaux
G35 Burgundy pinstripes

Tessuto / Fabric

99% poliestere 1% viscosa
99% polyester 1% viscose
170 g / m²



RODANO

Dettagli / Details

- 1 tasca

- 1 pocket

Taglie / Sizes

Taglia unica / One size

Misure / Dimensions

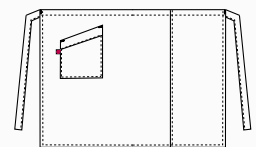
70x98 cm

COD. Q1HX0136

Art. 20P01H154
G35 Gessato bordeaux
G35 Burgundy pinstripes

Tessuto / Fabric

99% poliestere 1% viscosa
99% polyester 1% viscose
170 g / m²





MANCHESTER

Dettagli / Details

- 3 tasche - Taschino portapenne
- Allacciatura collo regolabile
- Anello porta torcione

- 3 pockets - Pen pocket
- Adjustable halter
- Cloth ring

Taglie / Sizes

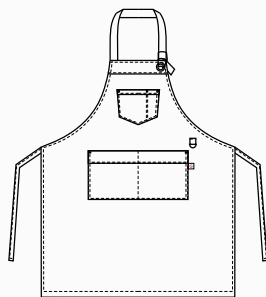
Taglia unica / One size

COD. Q1HX0137

Art. 18P01H019
U32 Nero / Black

Tessuto / Fabric

65% poliestere 35% cotone
65% polyester 35% cotton
200 g / m²



LUNA

Dettagli / Details

- 2 tasche - Taschino portapenne
- Allacciatura collo regolabile con velcro

- 2 pockets
- Pen pocket
- Adjustable halter with velcro

Taglie / Sizes

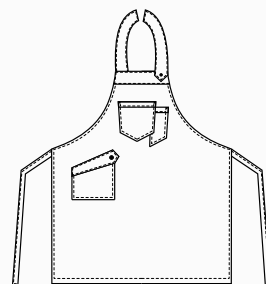
Taglia unica / One size

COD. Q1HX0138

Art. 18P01H020
U32 Nero / Black

Tessuto / Fabric

65% poliestere 35% cotone
65% polyester 35% cotton
200 g / m²





DOUGLAS

Dettagli / Details

- 3 tasche
- 2 taschini portapenne
- Allacciatura collo regolabile

- 3 pockets
- 2 pen pockets
- Adjustable halter

Taglie / Sizes

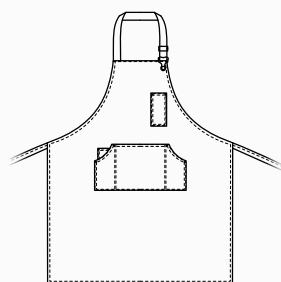
Taglia unica / One size

COD. Q1HX0141

Art. 18P01H013
J48 Jeans blu / Jeans blue

Tessuto / Fabric

100% cotone
100% cotton
260 g / m²



SHANNON

Dettagli / Details

- 3 tasche
- Taschino portapenne

- 3 pockets
- 1 pen pocket

Taglie / Sizes

Taglia unica / One size

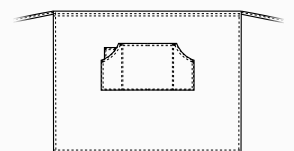
Misure / Dimensions 70x80 cm

COD. Q1HX0142

Art. 18P01H014
J48 Jeans blu / Jeans blue

Tessuto / Fabric

100% cotone
100% cotton
260 g / m²



CALIFORNIA

Dettagli / Details

- 2 tasche
- 2 taschini portapenne
- Allacciatura collo regolabile

- 2 pockets
- 2 pen pockets
- Adjustable halter

Taglie / Sizes

Taglia unica / One size

COD. Q1HX0139

Art. 19P01H072

J48 Jeans blu / Jeans blue

Tessuto 1 / Fabric 1

100% cotone

100% cotton

260 g / m²

Tessuto 2 / Fabric 2

100% poliestere

100% polyester

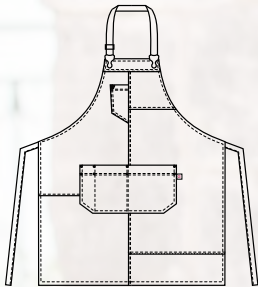
160 g / m²

Tessuto 3 / Fabric 3

92% poliestere 8% elastan

92% poliestere 8% elastane

247 g / m²



KANSAS

Dettagli / Details

- 2 tasche
- Allacciatura collo regolabile

- 2 pockets
- Adjustable halter

Taglie / Sizes

Taglia unica / One size

COD. Q1HX0140

Art. 19P01H073
J48 Jeans blu / Jeans blue

Tessuto 1 / Fabric 1

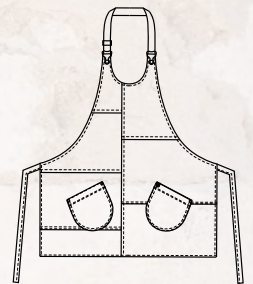
100% cotone
100% cotton
260 g / m²

Tessuto 2 / Fabric 2

100% poliestere
100% polyester
160 g / m²

Tessuto 3 / Fabric 3

92% poliestere 8% elasthan
92% polyester 8% elastane
247 g / m²



NIZZA

Dettagli / Details

- 2 tasche
- 1 taschino portapenne
- Allacciatura collo regolabile
- Anello porta torcione

- 2 pockets
- 1 pen pocket
- Adjustable halter
- Cloth ring

Taglie / Sizes

Taglia unica / One size

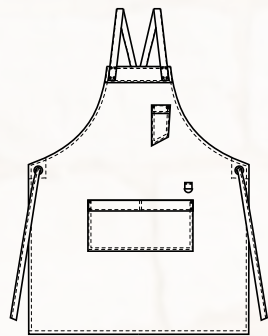
COD. Q1HX0143

Art. 19P01H071

J32 Jeans nero / Black jeans

Tessuto / Fabric

75% cotone 23% poliestere 2% elasthan
75% cotton 23% polyester 2% elastane
210 g / m²



LUNA

Dettagli / Details

- 2 tasche
- 1 taschino portapenne
- Allacciatura collo regolabile con velcro

- 2 pockets
- 1 pen pocket
- Adjustable halter with velcro

Taglie / Sizes

Taglia unica / One size

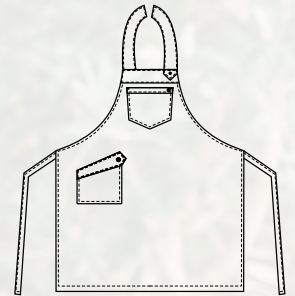
COD. Q1HX0144

Art. 19P01H069

J32 Jeans nero / Black jeans

Tessuto / Fabric

75% cotone 23% poliestere 2% elasthan
75% cotton 23% polyester 2% elastane
210 g / m²



ZANTE

Dettagli / Details

- 2 grandi tasche
- Allacciatura collo regolabile

- 2 big pockets
- Adjustable halter

Taglie / Sizes

Taglia unica / One size

Misure / Dimensions

66x92 cm

COD. Q1H00212

C02 Grigio chiaro / Light grey

U32 Nero / Black

U35 Bordeaux / Bordeaux

Z41 Tortora / Taupe

Z43 Militare / Military green

Z44 Marrone / Brown

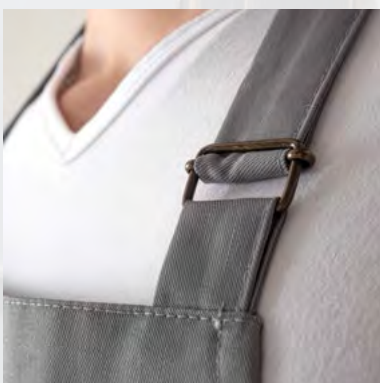
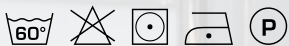
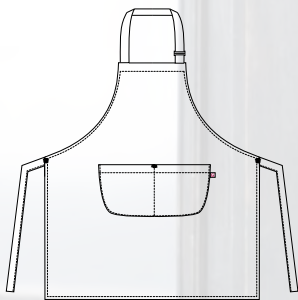
Z48 Blu / Blue

Tessuto / Fabric

65% poliestere 35% cotone

65% polyester 35% cotton

200 g / m²



COD. Q1H00212

Z43 Militare / Military green



COD. Q1H00212

C02 Grigio chiaro / Light grey



COD. Q1H00212

U32 Nero / Black



COD. Q1H00212

U35 Bordeaux / Bordeaux



COD. Q1H00212

Z41 Tortora / Taupe



COD. Q1H00212

Z43 Militare / Military green



COD. Q1H00212

Z44 Marrone / Brown



COD. Q1H00212

Z48 Blu / Blue

ho.re.ca. & services

Grembiuli

Aprons

MATERA

Dettagli / Details

- 1 tasca
- 1 pocket

Taglie / Sizes

Taglia unica / One size

Misure / Dimensions

75x105 cm

COD. Q1H00213

C02 Grigio chiaro / Light grey

U32 Nero / Black

U35 Bordeaux / Bordeaux

Z41 Tortora / Taupe

Z43 Militare / Military green

Z44 Marrone / Brown

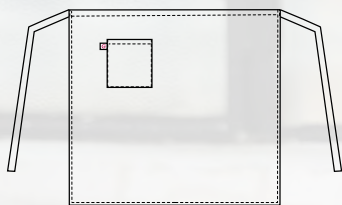
Z48 Blu / Blue

Tessuto / Fabric

65% poliestere 35% cotone

65% polyester 35% cotton

200 g / m²



COD. Q1H00213

Z48 Blu / Blue



COD. Q1H00213

C02 Grigio chiaro / Light grey



COD. Q1H00213

U32 Nero / Black



COD. Q1H00213

U35 Bordeaux / Bordeaux



COD. Q1H00213

Z41 Tortora / Taupe



COD. Q1H00213

Z43 Militare / Military green



COD. Q1H00213

Z44 Marrone / Brown



COD. Q1H00213

Z48 Blu / Blue

BARI

Dettagli / Details

- 1 tasca
- 1 pocket

Taglie / Sizes

Taglia unica / One size

Misure / Dimensions

45x80 cm

COD. Q1H00214

C02 Grigio chiaro / Light grey

U32 Nero / Black

U35 Bordeaux / Bordeaux

Z41 Tortora / Taupe

Z43 Militare / Military green

Z44 Marrone / Brown

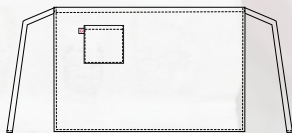
Z48 Blu / Blue

Tessuto / Fabric

65% poliestere 35% cotone

65% polyester 35% cotton

200 g / m²



COD. Q1H00214

U35 Bordeaux / Bordeaux



COD. Q1H00214

C02 Grigio chiaro / Light grey



COD. Q1H00214

U32 Nero / Black



COD. Q1H00214

U35 Bordeaux / Bordeaux



COD. Q1H00214

Z41 Tortora / Taupe



COD. Q1H00214

Z43 Militare / Military green



COD. Q1H00214

Z44 Marrone / Brown



COD. Q1H00214

Z48 Blu / Blue

LIPARI

Dettagli / Details

- 1 grande tasca
- 2 taschini portapenne
- Allacciatura collo regolabile con bottoni

- 1 big pocket
- 2 pen pockets
- Adjustable halter with buttons

Taglie / Sizes

Taglia unica / One size

Misure / Dimensions

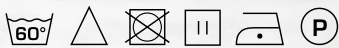
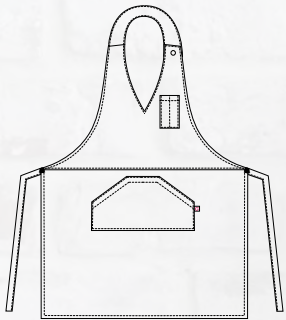
68x88 cm

COD. Q1H00207

U32 Nero / Black
Z44 Marrone / Brown
U33 Caffè / Coffee
U35 Bordeaux / Bordeaux
Z46 Fucsia / Fuchsia
D25 Rosso / Red
D24 Arancio / Orange
C03 Giallo / Yellow
C09 Pistacchio / Pistachio
Z49 Verde scuro / Dark green
Z48 Blu / Blue
U38 Bluette / Royal
D28 Turchese / Turquoise

Tessuto / Fabric

100% poliestere
100% polyester
220 g / m²



COD. Q1H00207

U33 Caffè / Coffee



COD. Q1H00207

U32 Nero / Black



COD. Q1H00207

Z44 Marrone / Brown



COD. Q1H00207

U33 Caffè / Coffee



COD. Q1H00207

U35 Bordeaux / Bordeaux



COD. Q1H00207

Z46 Fucsia / Fuchsia



COD. Q1H00207

D25 Rosso / Red



COD. Q1H00207

D24 Arancio / Orange



COD. Q1H00207

C03 Giallo / Yellow



COD. Q1H00207

C09 Pistacchio / Pistachio



COD. Q1H00207

Z49 Verde scuro / Dark green



COD. Q1H00207

Z48 Blu / Blue



COD. Q1H00207

U38 Bluette / Royal



COD. Q1H00207

D28 Turchese / Turquoise



COD. Q1H00210

U32 Nero / Black



COD. Q1H00210

Z44 Marrone / Brown



COD. Q1H00210

U33 Caffè / Coffee



COD. Q1H00210

U35 Bordeaux / Bordeaux



COD. Q1H00210

Z46 Fucsia / Fuchsia



COD. Q1H00210

D25 Rosso / Red



COD. Q1H00210

D24 Arancio / Orange



COD. Q1H00210

C03 Giallo / Yellow



COD. Q1H00210

C09 Pistacchio / Pistachio



COD. Q1H00210

Z49 Verde scuro / Dark green



COD. Q1H00210

Z48 Blu / Blue



COD. Q1H00210

U38 Bluette / Royal



COD. Q1H00210

D28 Turchese / Turquoise

POSITANO

Dettagli / Details

- 2 tasche
Coperto dietro

- 2 pockets
Covered backside

Taglie / Sizes

Taglia unica / One size

Misure / Dimensions

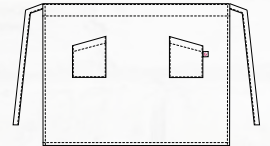
68x59 cm

COD. Q1H00210

U32 Nero / Black
Z44 Marrone / Brown
U33 Caffè / Coffee
U35 Bordeaux / Bordeaux
Z46 Fucsia / Fuchsia
D25 Rosso / Red
D24 Arancio / Orange
C03 Giallo / Yellow
C09 Pistacchio / Pistachio
Z49 Verde scuro / Dark green
Z48 Blu / Blue
U38 Bluette / Royal
D28 Turchese / Turquoise

Tessuto / Fabric

100% poliestere
100% polyester
220 g / m²



COD. Q1H00210

U32 Nero / Black

ho.re.ca. & services

Grembiuli

Aprons

PUB

Dettagli / Details

- 3 grandi tasche

- 3 big pockets

Taglie / Sizes

Taglia unica / One size

Misure / Dimensions

51x32 cm

COD. Q1H00211

U32 Nero / Black

Z44 Marrone / Brown

U33 Caffè / Coffee

U35 Bordeaux / Bordeaux

Z46 Fucsia / Fuchsia

D25 Rosso / Red

D24 Arancio / Orange

C03 Giallo / Yellow

C09 Pistacchio / Pistachio

Z49 Verde scuro / Dark green

Z48 Blu / Blue

U38 Bluette / Royal

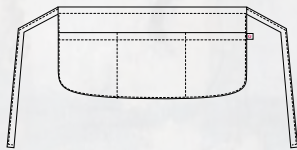
D28 Turchese / Turquoise

Tessuto / Fabric

100% poliestere

100% polyester

220 g / m²



COD. Q1H00211

U32 Nero / Black



COD. Q1H00211

U32 Nero / Black



COD. Q1H00211

Z44 Marrone / Brown



COD. Q1H00211

U33 Caffè / Coffee



COD. Q1H00211

U35 Bordeaux / Bordeaux



COD. Q1H00211

Z46 Fucsia / Fuchsia



COD. Q1H00211

D25 Rosso / Red



COD. Q1H00211

D24 Arancio / Orange



COD. Q1H00211

C03 Giallo / Yellow



COD. Q1H00211

C09 Pistacchio / Pistachio



COD. Q1H00211

Z49 Verde scuro / Dark green



COD. Q1H00211

Z48 Blu / Blue



COD. Q1H00211

U38 Bluette / Royal



COD. Q1H00211

D28 Turchese / Turquoise

CAPRI

Dettagli / Details

- 2 taschini portapenne
- 2 tasche
- Allacciatura collo regolabile con bottoni

- 2 pen pockets
- 2 pockets
- Adjustable halter with buttons

Taglie / Sizes

Taglia unica / One size

Misure / Dimensions

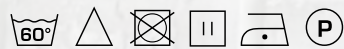
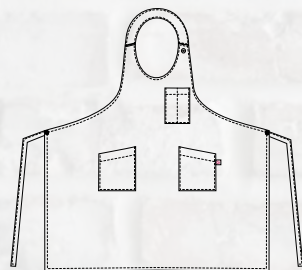
81x122,5 cm

COD. Q1H00208

U32 Nero / Black
Z44 Marrone / Brown
U33 Caffè / Coffee
U35 Bordeaux / Bordeaux
Z46 Fucsia / Fuchsia
D25 Rosso / Red
D24 Arancio / Orange
C03 Giallo / Yellow
C09 Pistacchio / Pistachio
Z49 Verde scuro / Dark green
Z48 Blu / Blue
U38 Bluette / Royal
D28 Turchese / Turquoise

Tessuto / Fabric

100% poliestere
100% polyester
220 g / m²



COD. Q1H00208

U35 Bordeaux / Bordeaux



COD. Q1H00208

U32 Nero / Black



COD. Q1H00208

Z44 Marrone / Brown



COD. Q1H00208

U33 Caffè / Coffee



COD. Q1H00208

U35 Bordeaux / Bordeaux



COD. Q1H00208

Z46 Fucsia / Fuchsia



COD. Q1H00208

D25 Rosso / Red



COD. Q1H00208

D24 Arancio / Orange



COD. Q1H00208

C03 Giallo / Yellow



COD. Q1H00208

C09 Pistacchio / Pistachio



COD. Q1H00208

Z49 Verde scuro / Dark green



COD. Q1H00208

Z48 Blu / Blue



COD. Q1H00208

U38 Bluette / Royal



COD. Q1H00208

D28 Turchese / Turquoise

LATINA

Dettagli / Details

- 1 taschino portapenne
- 1 grande tasca
- Allacciatura collo regolabile con bottoni

- 1 pen pocket
- 1 big pocket
- Adjustable halter with buttons

Taglie / Sizes

Taglia unica / One size

Misure / Dimensions

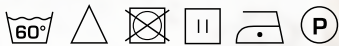
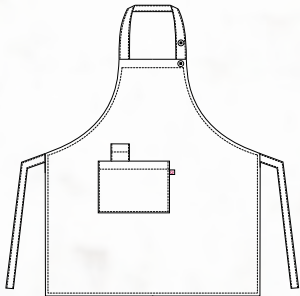
81x122,5 cm

COD. Q1H00209

U32 Nero / Black
Z44 Marrone / Brown
U33 Caffè / Coffee
U35 Bordeaux / Bordeaux
Z46 Fucsia / Fuchsia
D25 Rosso / Red
D24 Arancio / Orange
C03 Giallo / Yellow
C09 Pistacchio / Pistachio
Z49 Verde scuro / Dark green
Z48 Blu / Blue
U38 Bluette / Royal
D28 Turchese / Turquoise

Tessuto / Fabric

100% poliestere
100% polyester
220 g / m²



COD. Q1H00209

D25 Rosso / Red



COD. Q1H00209

U32 Nero / Black



COD. Q1H00209

Z44 Marrone / Brown



COD. Q1H00209

U33 Caffè / Coffee



COD. Q1H00209

U35 Bordeaux / Bordeaux



COD. Q1H00209

Z46 Fucsia / Fuchsia



COD. Q1H00209

D25 Rosso / Red



COD. Q1H00209

D24 Arancio / Orange



COD. Q1H00209

C03 Giallo / Yellow



COD. Q1H00209

C09 Pistacchio / Pistachio



COD. Q1H00209

Z49 Verde scuro / Dark green



COD. Q1H00209

Z48 Blu / Blue



COD. Q1H00209

U38 Bluette / Royal



COD. Q1H00209

D28 Turchese / Turquoise



COD. Q5100215

U32 Nero / Black



COD. Q5100215

Z44 Marrone / Brown



COD. Q5100215

U33 Caffè / Coffee



COD. Q5100215

U35 Bordeaux / Bordeaux



COD. Q5100215

Z46 Fucsia / Fuchsia



COD. Q5100215

D25 Rosso / Red



COD. Q5100215

D24 Arancio / Orange



COD. Q5100215

C03 Giallo / Yellow



COD. Q5100215

C09 Pistacchio / Pistachio



COD. Q5100215

Z49 Verde scuro / Dark green



COD. Q5100215

Z48 Blu / Blue



COD. Q5100215

U38 Bluette / Royal



COD. Q5100215

D28 Turchese / Turquoise

JERRY

Dettagli / Details

- Regolabile con elastico
- Adjustable with elastic band

Taglie / Sizes

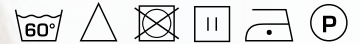
Taglia unica / One size

COD. Q5100215

U32 Nero / Black
Z44 Marrone / Brown
U33 Caffè / Coffee
U35 Bordeaux / Bordeaux
Z46 Fucsia / Fuchsia
D25 Rosso / Red
D24 Arancio / Orange
C03 Giallo / Yellow
C09 Pistacchio / Pistachio
Z49 Verde scuro / Dark green
Z48 Blu / Blue
U38 Bluette / Royal
D28 Turchese / Turquoise

Tessuto / Fabric

100% poliestere
100% polyester
220 g / m²



COD. Q5100215

D25 Rosso / Red



COD. Q5100216

U32 Nero / Black



COD. Q5100216

Z44 Marrone / Brown



COD. Q5100216

U33 Caffè / Coffee



COD. Q5100216

U35 Bordeaux / Bordeaux



COD. Q5100216

Z46 Fucsia / Fuchsia



COD. Q5100216

D25 Rosso / Red



COD. Q5100216

D24 Arancio / Orange



COD. Q5100216

C03 Giallo / Yellow



COD. Q5100216

C09 Pistacchio / Pistachio



COD. Q5100216

Z49 Verde scuro / Dark green



COD. Q5100216

Z48 Blu / Blue



COD. Q5100216

U38 Bluette / Royal



COD. Q5100216

D28 Turchese / Turquoise

PANAREA

Dettagli / Details

- Regolabile con elastico
- Adjustable with elastic band

Taglie / Sizes

Taglia unica / One size

COD. Q5100216

U32 Nero / Black
Z44 Marrone / Brown
U33 Caffè / Coffee
U35 Bordeaux / Bordeaux
Z46 Fucsia / Fuchsia
D25 Rosso / Red
D24 Arancio / Orange
C03 Giallo / Yellow
C09 Pistacchio / Pistachio
Z49 Verde scuro / Dark green
Z48 Blu / Blue
U38 Bluette / Royal
D28 Turchese / Turquoise

Tessuto / Fabric

100% poliestere
100% polyester
220 g / m²



COD. Q5100216

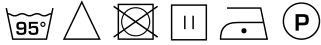
Z44 Marrone / Brown





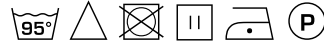
COD. Q51X0145

Art. 20P05I2058
C02 Grigio / Grey
100% poliestere / polyester
170 g / m²



COD. Q51X0145

Art. 20P05I2058
D21 Beige / Beige
100% poliestere / polyester
170 g / m²



COD. Q51X0145

Art. 20P05I2058
Z44 Marrone / Brown
100% poliestere / polyester
170 g / m²



COD. Q51X0146

Art. 19P05I132
J32 Jeans nero / Black jeans
75% cotone 23% poliestere 2% elastan
75% cotton 23% polyester 2% elastane
210 g / m²



COD. Q51X0147

Art. 18P05I060
J48 Jeans blu / Jeans blue
100% cotone
100% cotton
220 g / m²



COD. Q51X0234

Art. 409
U32 Nero / Black
100% poliestere / polyester
220 g / m²



COD. Q51X0235

Art. 511
U32 Nero / Black
100% poliestere / polyester
220 g / m²



COD. Q51X0182

Art. 19P05I871
U32 Nero / Black
100% poliestere / polyester
220 g / m²



TOMMY

Taglie / Sizes
Taglia unica / One size

COD. Q51X0145

Art. 20P05I2058
C02 Grigio / Grey
D21 Beige / Beige
Z44 Marrone / Brown

COPPOLA

Dettagli / Details
- Regolabile con elastico
- Adjustable with elastic

Taglie / Sizes
Taglia unica / One size

COD. Q51X0146

Art. 19P05I132
J32 Jeans nero / Black jeans

COD. Q51X0147

Art. 18P05I060
J48 Jeans blu / Jeans blue

PAPILLON

Taglie / Sizes
Taglia unica / One size

COD. Q51X0234

Art. 409
U32 Nero / Black

CRAVATTA UNISEX

Taglie / Sizes
Taglia unica / One size

COD. Q51X0235

Art. 511
U32 Nero / Black

CRAVATTA DONNA

Taglie / Sizes
Taglia unica / One size

COD. Q51X0182

Art. 19P05I871
U32 Nero / Black



Giacca
ELIO
pag. 93



Giblor's
italian worklife specialist

Giacca
DANA
pag. 92

DANA

Dettagli / Details

- Sfiancata
- Sfoderata
- 2 bottoni

- *Tight waisted*
- *Unlined*
- *2 buttons*

Taglie / Sizes

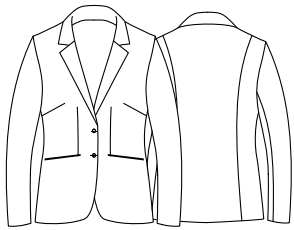
XS ÷ XXXL Slim Fit

COD. Q1CX0148

Art. 17P01C901
U32 Nero / Black

Tessuto / Fabric

95% poliestere 5% elasthan
95% polyester 5% elastane
220 g / m²



LAYLA

Dettagli / Details

- Fondo stretto
- 2 tasche

- *Slim leg*
- *2 pockets*

Taglie / Sizes

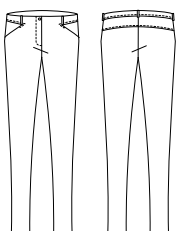
XS ÷ XXXL Slim Fit

COD. Q1CX0150

Art. 17P01P903
U32 Nero / Black

Tessuto / Fabric

95% poliestere 5% elasthan
95% polyester 5% elastane
220 g / m²





ELIO

Dettagli / Details

- Sfoderata
- 2 bottoni

- Unlined
- 2 buttons

Taglie / Sizes

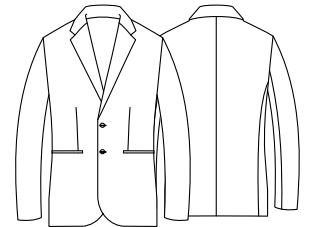
44 ÷ 58 Slim Fit

COD. Q1CX0152

Art. 17P01C966
U32 Nero / Black

Tessuto / Fabric

95% poliestere 5% elasthan
95% polyester 5% elastane
220 g / m²



GIOVANNI



Dettagli / Details

- Sfoderato - Fondo stretto
- 2 tasche alla francese
- 2 taschine posteriori

- Unlined - Slim leg
- 2 side pockets
- 2 rear pockets

Taglie / Sizes

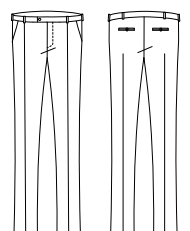
42 ÷ 58 Slim Fit

COD. Q1PX0154

Art. 17P01P546
U32 Nero / Black

Tessuto / Fabric

95% poliestere 5% elasthan
95% polyester 5% elastane
220 g / m²



DANA

Dettagli / Details

- Sfiancata
- Sfoderata
- 2 bottoni

- *Tight waisted*
- *Unlined*
- *2 buttons*

Taglie / Sizes

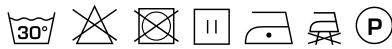
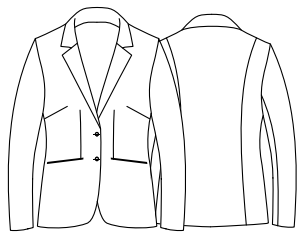
XS ÷ XXXL Slim Fit

COD. Q1CX0149

Art. 20P01C901
Z48 Blu / Blue

Tessuto / Fabric

95% poliestere 5% elasthan
95% polyester 5% elastane
220 g / m²



LAYLA

Dettagli / Details

- Fondo stretto
- 2 tasche

- *Slim leg*
- *2 pockets*

Taglie / Sizes

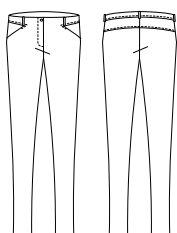
XS ÷ XXXL Slim Fit

COD. Q1CX0151

Art. 20P01P903
Z48 Blu / Blue

Tessuto / Fabric

95% poliestere 5% elasthan
95% polyester 5% elastane
220 g / m²





ELIO



Dettagli / Details

- Sfoderata
- 2 bottoni

- Unlined
- 2 buttons

Taglie / Sizes

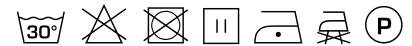
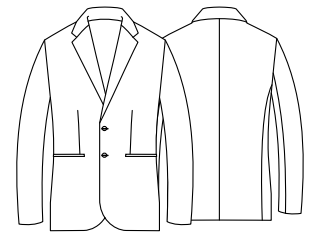
44 ÷ 58 Slim Fit

COD. Q1CX0153

Art. 20P01C966
Z48 Blu / Blue

Tessuto / Fabric

95% poliestere 5% elasthan
95% polyester 5% elastane
220 g / m²



GIOVANNI



Dettagli / Details

- Sfoderato - Fondo stretto
- 2 tasche alla francese
- 2 taschine posteriori

- Unlined - Slim leg
- 2 side pockets
- 2 rear pockets

Taglie / Sizes

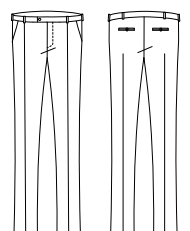
42 ÷ 58 Slim Fit

COD. Q1PX0155

Art. 20P01P546
Z48 Blu / Blue

Tessuto / Fabric

95% poliestere 5% elasthan
95% polyester 5% elastane
220 g / m²



MIGUEL

Dettagli / Details

- Foderato
- 2 tasche
- 4 bottoni
- Fascette regolabili

- Lined
- 2 pockets
- 4 buttons
- Adjustable buckle

Taglie / Sizes

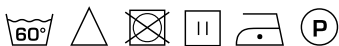
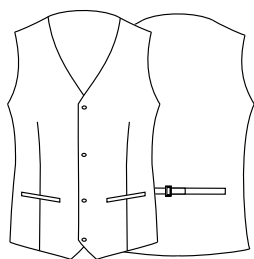
XS ÷ XXXL Regular Fit

COD. Q1EX0158

Art. 106/E
U32 Nero / Black

Tessuto / Fabric

100% poliestere
100% polyester
160 g / m²



COD. Q1EX0160

Art. 106BX
U35 Bordeaux / Burgundy

100% poliestere / polyester
220 g / m²



COD. Q1EX0159

Art. 106
Z48 Blu / Blue

100% poliestere / polyester
160 g / m²



ROSITA

Dettagli / Details

- Sfoderato
- 2 tasche
- 4 bottoni
- Fascette regolabili

- Unlined
- 2 pockets
- 4 buttons
- Adjustable buckle

Taglie / Sizes

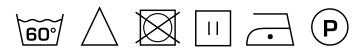
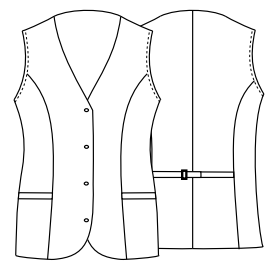
XS ÷ XXL Regular Fit

COD. Q1EX0161

Art. 270/E
U32 Nero / Black

Tessuto / Fabric

100% poliestere
100% polyester
160 g / m²



COD. Q1EX0163

Art. 270BX
U35 Bordeaux / Burgundy

100% poliestere / polyester
220 g / m²



COD. Q1EX0162

Art. 270
Z48 Blu / Blue

100% poliestere / polyester
160 g / m²



MATTEO

Dettagli / Details

- Sfoderato
- 2 tasche alla francese
- 2 taschine posteriori
- Fondo stretto

- Unlined
- 2 side pockets
- 2 rear pockets
- Slim leg

Taglie / Sizes

40 ÷ 64 Slim Fit

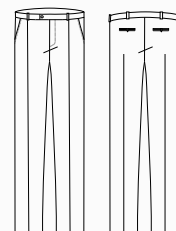
COD. Q1PX0156

Art. 90
U32 Nero / Black

COD. Q1PX0157

Art. 90/B
Z48 Blu / Blue

Tessuto / Fabric
100% poliestere
100% polyester
160 g / m²



Giblor's
italian work/life specialist



Gilet
ROSITA
pag. 97

Camicia
AURORA
pag. 103

NOVAK

Dettagli / Details

- Collo coreano
- Polsino regolabile

- Mandarin collar
- Adjustable cuff

Taglie / Sizes

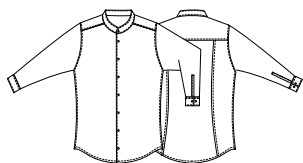
S ÷ 4XL Slim Fit

COD. Q1NX0164

Art. 19P01N085
C01 Bianco / White
U32 Nero / Black

Tessuto / Fabric

65% poliestere 35% cotone
65% polyester 35% cotton
110 g / m²



COD. Q1NX0164

Art. 19P01N085
U32 Nero / Black



VENUS

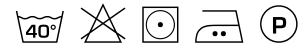
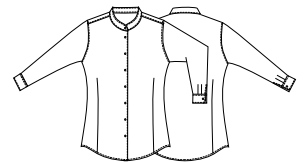
Dettagli / Details
- Collo coreano
- Mandarin collar

Taglie / Sizes
XS ÷ 4XL Regular Fit

COD. Q1NX0165

Art. 19P01N086
C01 Bianco / White
U32 Nero / Black

Tessuto / Fabric
65% poliestere 35% cotone
65% polyester 35% cotton
110 g / m²



COD. Q1NX0165

Art. 19P01N086
C01 Bianco / White



PRINCE

Dettagli / Details

- Collo classico
- Polsino regolabile

- Classic collar
- Adjustable cuff

Taglie / Sizes

XS ÷ 5XL Slim Fit

COD. Q1NX0166

Art. 11P01056
C01 Bianco / White
U32 Nero / Black

Tessuto / Fabric

65% poliestere 35% cotone
65% polyester 35% cotton
110 g / m²



COD. Q1NX0166

Art. 11P01056
U32 Nero / Black





AURORA

Dettagli / Details

- Collo classico

- Classic collar

Taglie / Sizes

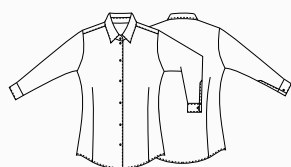
XS ÷ XXXL Regular Fit

COD. Q1NX0167

Art. 1600
C01 Bianco / White

Tessuto / Fabric

65% poliestere 35% cotone
65% polyester 35% cotton
110 g / m²



FARA

Dettagli / Details

- Collo classico

- Classic collar

Taglie / Sizes

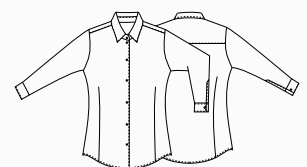
XS ÷ XXXL Regular Fit

COD. Q1NX0168

Art. 11P01057
U32 Nero / Black

Tessuto / Fabric

65% poliestere 35% cotone
65% polyester 35% cotton
110 g / m²





ORTENSIA

Dettagli / Details

- 2 tasche
- 2 pockets

Taglie / Sizes

XS ÷ 4XL Slim Fit

COD. Q9R00220

C02 Grigio chiaro / Light grey
U35 Bordeaux / Bordeaux

Tessuto / Fabric

65% poliestere 35% cotone
65% polyester 35% cotton
113 g / m²





COD. Q9R00220

C02 Grigio chiaro / Light grey



VIOLA

Dettagli / Details

- 3 tasche
- Maniche ad aletta
- Ampia vestibilità

- 3 pockets
- Flap sleeves
- Large fit

Taglie / Sizes

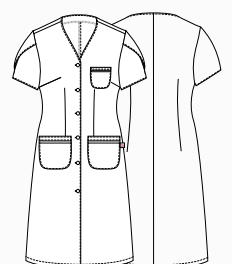
XS ÷ 4XL

COD. Q9R00221

Q32 Quadro nero / *Black check*
Q35 Quadro bordeaux / *Bordeaux check*

Tessuto / Fabric

60% cotone 40% poliestere
60% cotton 40% polyester
145 g / m²





MAGNOLIA

Dettagli / Details

- Senza tasche
- No pockets

Taglie / Sizes

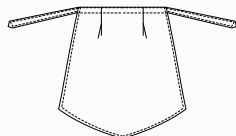
Taglia unica / One size

COD. Q9H00224

C01 Bianco / White

Tessuto / Fabric

100% cotone
100% cotton
185 g / m²



MIMOSA

Dettagli / Details

- Senza tasche
- No pockets

Taglie / Sizes

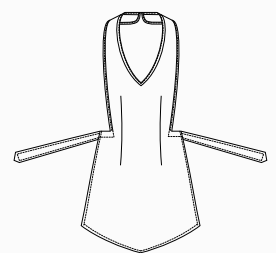
Taglia unica / One size

COD. Q9H00225

C01 Bianco / White

Tessuto / Fabric

100% cotone
100% cotton
185 g / m²



CAMELIA

Dettagli / Details

- 2 tasche
- 2 spacchetti laterali

- 2 pockets
- 2 side vents

Taglie / Sizes

XS ÷ 4XL Regular Fit

COD. Q9K00222

C01 Bianco / White

Tessuto / Fabric

65% poliestere 35% cotone
65% polyester 35% cotton
145 g / m²

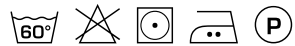


COD. Q9K00223

C02 Grigio chiaro / Light grey
U35 Bordeaux / Bordeaux

Tessuto / Fabric

65% poliestere 35% cotone
65% polyester 35% cotton
113 g / m²



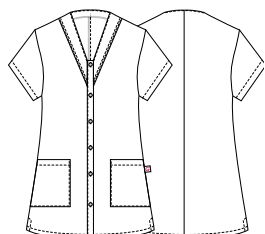
COD. Q9K00222

C01 Bianco / White



COD. Q9K00223

C02 Grigio chiaro / Light grey





COD. Q9K00223

U35 Bordeaux / Bordeaux

ALTEA

Dettagli / Details

- 2 tasche
- Chiusura con zip rovesciata

- 2 pockets
- Inverted zip fastening

Taglie / Sizes

XS ÷ 4XL Slim Fit

COD. Q9K00226

C01 Bianco / White

Tessuto / Fabric

100% cotone
100% cotton
185 g / m²



COD. Q9K00227

C04 Salmone / Salmon
C08 Azzurro chiaro / Light blue
M19 Verde acqua / Acqua green

Tessuto / Fabric

70% poliestere 30% cotone
70% polyester 30% cotton
132 g / m²



COD. Q9K00226

C01 Bianco / White

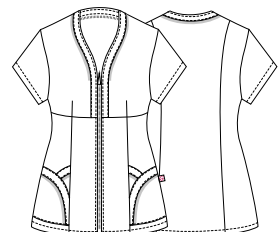
COD. Q9K00227

C08 Azzurro chiaro / Light blue



COD. Q9K00227

M19 Verde acqua / Acqua green





COD. Q9K00227

C04 Salmone / Salmon

PRIMULA

Dettagli / Details

- 2 tasche
- Maniche arrotolabili

- 2 pockets
- Roll-up sleeves

Taglie / Sizes

XS ÷ 3XL Regular Fit

COD. Q9K00249

C01 Bianco / White

COD. Q9K00251

D25 Rosso / Red

Tessuto / Fabric

65% poliestere 35% cotone
65% polyester 35% cotton
143 g / m²

COD. Q9K00250

Q32 Quadro nero / Black check

Tessuto / Fabric

60% cotone 40% poliestere
60% cotton 40% polyester
100 g / m²



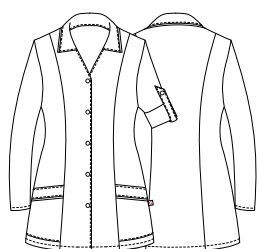
COD. Q9K00249

C01 Bianco / White



COD. Q9K00251

D25 Rosso / Red





COD. Q9K00250

Q32 Quadro nero / *Black check*

RICKY

Dettagli / Details

- 3 tasche
- Maniche arrotolabili

- 3 pockets
- Roll-up sleeves

Taglie / Sizes

S ÷ 4XL Comfort Fit

COD. Q9K00252

C01 Bianco / White

COD. Q9K00254

D25 Rosso / Red

Tessuto / Fabric

65% poliestere 35% cotone
65% polyester 35% cotton
143 g / m²

COD. Q9K00253

Q32 Quadro nero / Black check

Tessuto / Fabric

60% cotone 40% poliestere
60% cotton 40% polyester
100 g / m²



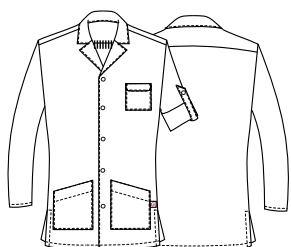
COD. Q9K00252

C01 Bianco / White



COD. Q9K00253

Q32 Quadro nero / Black check





COD. Q9K00254

D25 Rosso / Red



COD. Q9H00228

Q32 Quadro nero / *Black check*



COD. Q9H00229

C02 Grigio chiaro / *Light grey*



COD. Q9H00229

U35 Bordeaux / *Bordeaux*



COD. Q9H00232

C01 Bianco / *White*



COD. Q9H00233

D25 Rosso / *Red*



COD. Q9H00270

C04 Salmone / *Salmon*



COD. Q9H00270

C08 Azzurro chiaro / *Light blue*



COD. Q9H00270

M19 Verde acqua / *Acqua green*

ZEFIRO

Dettagli / Details

- 3 tasche
- Chiusura con laccetti sui fianchi

- 3 pockets
- Closure with string on the sides

Taglie / Sizes

Taglia unica / One size

COD. Q9H00228

Q32 Quadro nero / Black check

Tessuto / Fabric

60% cotone 40% poliestere
60% cotton 40% polyester
100 g / m²

COD. Q9H00229

C02 Grigio chiaro / Light grey
U35 Bordeaux / Bordeaux

Tessuto / Fabric

65% poliestere 35% cotone
65% polyester 35% cotton
113 g / m²

COD. Q9H00232

C01 Bianco / White

COD. Q9H00233

D25 Rosso / Red
U32 Nero / Black

Tessuto / Fabric

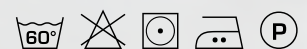
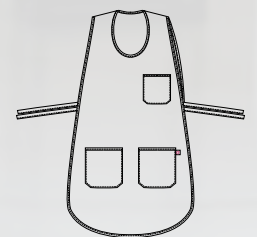
65% poliestere 35% cotone
65% polyester 35% cotton
143 g / m²

COD. Q9H00270

C04 Salmone / Salmon
C08 Azzurro chiaro / Light blue
M19 Verde acqua / Acqua green

Tessuto / Fabric

70% poliestere 30% cotone
70% polyester 30% cotton
132 g / m²



COD. Q9H00233

U32 Nero / Black

Giblor's

italian work/life specialist



**Health
&
Wellness**

La linea **Giblor's Essential** amplia l'offerta **Giblor's** e propone una gamma di prodotti ancor più competitiva per il settore **medicale e wellness**.

Grazie al know-how maturato dall'azienda in materia di tessuti e trattamenti, che ne assicurano le performance, i capi che fanno parte della linea **Essential Health&Wellness** garantiscono facilità di manutenzione e durata nel tempo, oltre che grande libertà di movimento e un fit perfetto, elementi imprescindibili per una divisa da lavoro di qualità.

La linea propone un ricco e variegato assortimento di casacche destinate al settore wellness, e molte sono le proposte per il settore medico, dove il colore è grande protagonista, grazie soprattutto ad alcune nuove nuance molto contemporanee.

ESSENTIAL

COLLECTION

*The **Giblor's Essential** line expands **Giblor's** offer and offers an even more competitive range of products for the **medical and wellness** sector.*

*Thanks to the know-how gained by the company in the field of fabrics and treatments, which ensure their performance, the garments that are part of the **Essential Health&Wellness** line guarantee ease of maintenance and durability, as well as great freedom of movement and a perfect fit. , essential elements for a quality work uniform.*

The line offers a rich and varied assortment of jackets intended for the wellness sector, and there are many proposals for the medical sector, where color is a great protagonist, thanks above all to some new very contemporary nuances.



MIKE

Dettagli / Details

- 3 tasche
- Abbottonatura con automatici
- Polsino con elastico

- 3 pockets
- Buttoning with press studs
- Cuff with elastic band

Taglie / Sizes

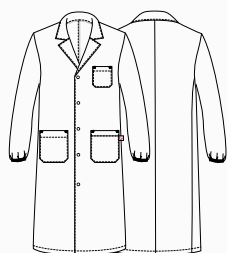
XS ÷ 4XL Regular Fit

COD. Q3R00247

C01 Bianco / White

Tessuto / Fabric

100% cotone
100% cotton
185 g / m²



MILLY

Dettagli / Details

- 3 tasche
- Abbottonatura con automatici
- Polsino con elastico

- 3 pockets
- Buttoning with press studs
- Cuff with elastic band

Taglie / Sizes

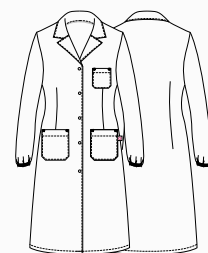
XS ÷ 3XL Regular Fit

COD. Q3R00248

C01 Bianco / White

Tessuto / Fabric

100% cotone
100% cotton
185 g / m²





TRISTANO

Dettagli / Details

- 3 tasche
- Polsino con elastico

- 3 pockets
- Cuff with elastic band

Taglie / Sizes

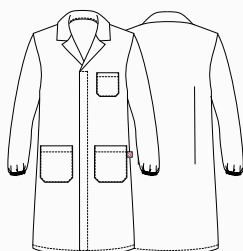
S ÷ 4XL Slim Fit

COD. Q3R00261

C01 Bianco / White

Tessuto / Fabric

100% cotone
100% cotton
185 g / m²



ISOTTA

Dettagli / Details

- 3 tasche
- Polsino con elastico

- 3 pockets
- Cuff with elastic band

Taglie / Sizes

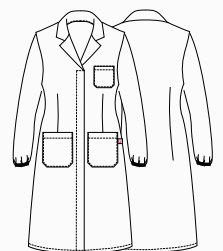
XS ÷ 3XL Regular Fit

COD. Q3R00262

C01 Bianco / White

Tessuto / Fabric

100% cotone
100% cotton
185 g / m²





Casacca
Gabriele
pag. 124



Casacca
Alice
pag. 126

GABRIELE

Dettagli / Details

- Chiusura con zip rovesciata
- Taschino sul petto
- 2 tasche
- Polsini con elastico
- Doppio cursore

- *Inverted zip fastening*
- *Breast pocket*
- *2 pockets*
- *Cuffs with elastic band*
- *Double cursor*

Taglie / Sizes

S ÷ 4XL Slim Fit

COD. Q3KX0174

Art. 20P03K191
C01 Bianco / White

COD. Q3KX0176

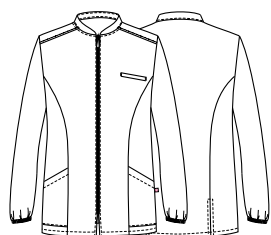
Art. 21P03K194
Z48 Blu / Blue

COD. Q3KX0175

Art. 20P03K194
D29 Verde / Green
M18 Azzurro / Light blue

Tessuto / Fabric

100% cotone
100% cotton
185 g / m²



COD. Q3KX0174

Art. 20P03K191
C01 Bianco / White



COD. Q3KX0176

Art. 21P03K194
Z48 Blu / Blue
100% cotone / cotton - 185 g / m²



COD. Q3KX0175

Art. 20P03K194
D29 Verde / Green
100% cotone / cotton - 185 g / m²



COD. Q3KX0175

Art. 20P03K194
M18 Azzurro / Light blue
100% cotone / cotton - 185 g / m²



ALICE

Dettagli / Details

- Chiusura con zip rovesciata
- Taschino sul petto
- 2 tasche
- Polsini con elastico
- Doppio cursore

- *Inverted zip fastening*
- *Breast pocket*
- *2 pockets*
- *Cuffs with elastic band*
- *Double cursor*

Taglie / Sizes

XS ÷ XXXL Slim Fit

COD. Q3KX0177

Art. 20P03K192
C01 Bianco / White

COD. Q3KX0179

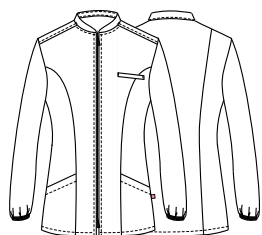
Art. 21P03K195
Z48 Blu / Blue

COD. Q3KX0178

Art. 20P03K195
D29 Verde / Green
M18 Azzurro / Light blue

Tessuto / Fabric

100% cotone
100% cotton
185 g / m²



COD. Q3KX0177

Art. 20P03K192
C01 Bianco / White



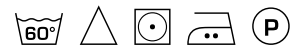
COD. Q3KX0179

Art. 21P03K195
Z48 Blu / Blue
100% cotone / cotton - 185 g / m²



COD. Q3KX0178

Art. 20P03K195
D29 Verde / Green
100% cotone / cotton - 185 g / m²



COD. Q3KX0178

Art. 20P03K195
M18 Azzurro / Light blue
100% cotone / cotton - 185 g / m²



ALAN

Dettagli / Details

- 2 tasche
- 1 tasca sul retro
- Elastico e coulisse

- 2 pockets
- 1 rear pocket
- Elasticated waistband with drawstring

COD. Q3PX0181

Art. 21P03P1340
Z48 Blu / Blue

Taglie / Sizes

XS ÷ 4XL Slim Fit

COD. Q3PX0180

Art. 1340
D29 Verde / Green
M18 Azzurro / Light blue

Taglie / Sizes

XS ÷ XXXL Slim Fit

Tessuto / Fabric

100% cotone
100% cotton
185 g / m²



COD. Q3PX0181

ART. 21P03P1340
Z48 Blu / Blue



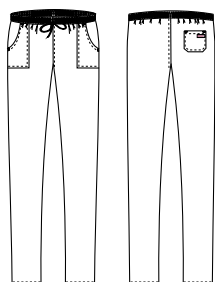
COD. Q3PX0180

Art. 1340
D29 Verde / Green



COD. Q3PX0180

Art. 1340
M18 Azzurro / Light blue



PIERO

Dettagli / Details

- 2 tasche
- Taschino sul petto
- 2 spacchetti laterali
- 2 pockets
- Breast pocket
- 2 side vents

Taglie / Sizes

XS ÷ 4XL Slim Fit



COD. Q3KX0170

Art. 21P03K1335
Z48 Blu / Blue

COD. Q3PX0169

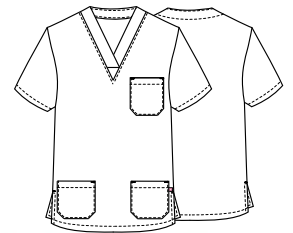
Art. 1335
D29 Verde / Green
M18 Azzurro / Light blue

Tessuto / Fabric

100% cotone / cotton
185 g / m²

COD. Q3KX0170

Art. 21P03K1335
Z48 Blu / Blue



COD. Q3KX0169

Art. 1335
M18 Azzurro / Light blue



COD. Q3KX0169

Art. 1335
D29 Verde / Green



MILENA

Dettagli / Details

- 2 tasche
- Taschino sul petto
- 2 spacchetti laterali

- 2 pockets
- Breast pocket
- 2 side vents

Taglie / Sizes

XS ÷ XXXL Slim Fit

COD. Q3KX0171

Art. 20P03K193
C01 Bianco / White

COD. Q3KX0173

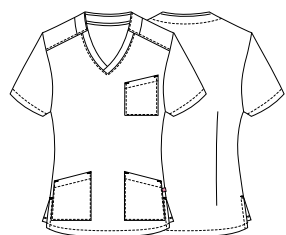
Art. 21P03K196
Z48 Blu / Blue

COD. Q3KX0172

Art. 20P03K196
D29 Verde / Green
M18 Azzurro / Light blue

Tessuto / Fabric

100% cotone
100% cotton
185 g / m²



COD. Q3KX0171

Art. 20P03K193
C02 Bianco / White



COD. Q3KX0172

Art. 20P03K196
D29 Verde / Green
100% cotone / cotton - 185 g / m²



COD. Q3KX0173

Art. 21P03K196
Z48 Blu / Blue
100% cotone / cotton - 185 g / m²



COD. Q3KX0172

Art. 20P03K196
M18 Azzurro / Light blue
100% cotone / cotton - 185 g / m²



**PANTALONI COORDINABILI
MATCHING PANTS**

pag. 128

GARY

Dettagli / Details

- 2 tasche
- Taschino sul petto
- 2 spacchetti laterali

- 2 pockets
- Breast pocket
- 2 side vents

Taglie / Sizes

XS ÷ 4XL Slim Fit

COD. Q3K00244

P18 Profilo azzurro / Light blue piping

P24 Profilo arancio / Orange piping

P29 Profilo verde / Green piping

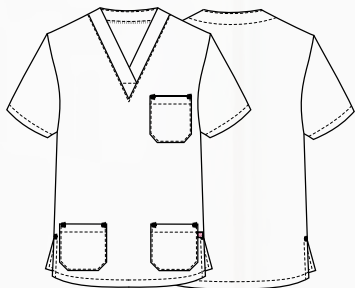
P48 Profilo blu / Blue piping

Tessuto / Fabric

100% cotone

100% cotton

185 g / m²



PANTALONI COORDINABILI
MATCHING PANTS

pag. 136/137

COD. Q3K00244

P24 Profilo arancio / Orange piping



COD. Q3K00244

P48 Profilo blu / Blue piping



COD. Q3K00244

P29 Profilo verde / Green piping



COD. Q3K00244

P18 Profilo azzurro / Light blue piping

JASON

Dettagli / Details

- 2 tasche
- Taschino sul petto
- 2 spacchetti laterali

- 2 pockets
- Breast pocket
- 2 side vents

Taglie / Sizes

XS ÷ 4XL Slim Fit

COD. Q3K00242

C01 Bianco / White

Tessuto / Fabric

100% cotone
100% cotton
185 g / m²

COD. Q3K00243

C07 Lilla chiaro / Light lilac

C09 Pistacchio / Pistachio

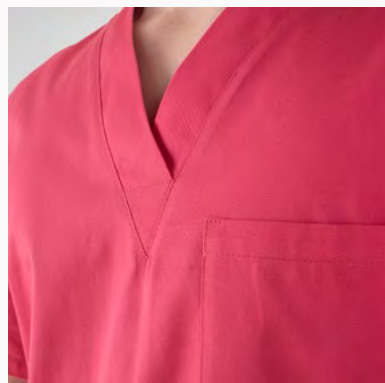
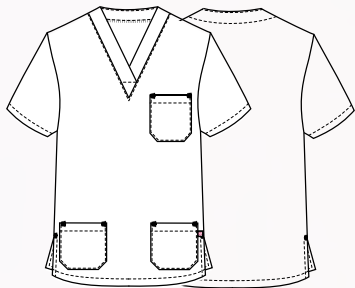
D24 Arancio / Orange

U38 Bluette / Royal

Z46 Fucsia / Fuchsia

Tessuto / Fabric

100% cotone
100% cotton
200 g / m²



COD. Q3K00243

Z46 Fucsia / Fuchsia



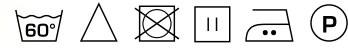
COD. Q3K00242

C01 Bianco / White



COD. Q3K00243

U38 Bluette / Royal



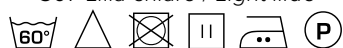
COD. Q3K00243

C09 Pistacchio / Pistachio



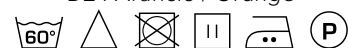
COD. Q3K00243

C07 Lilla chiaro / Light lilac



COD. Q3K00243

D24 Arancio / Orange



PITAGORA

Dettagli / Details

- 2 tasche
- 1 tasca sul retro
- Elastico e coulisse

- 2 pockets
- 1 rear pocket
- Elasticated waistband with drawstring

Taglie / Sizes

XS ÷ 4XL Slim Fit

COD. Q3P00245

C01 Bianco / White

Tessuto / Fabric

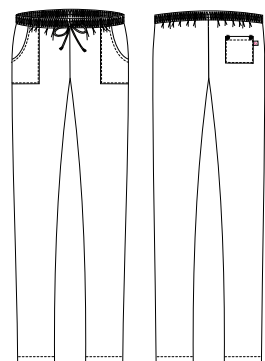
100% cotone
100% cotton
185 g / m²

COD. Q3P00246

C07 Lilla chiaro / Light lilac
C09 Pistacchio / Pistachio
D24 Arancio / Orange
U38 Bluette / Royal
Z46 Fucsia / Fuchsia

Tessuto / Fabric

100% cotone
100% cotton
200 g / m²



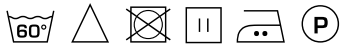
COD. Q3P00245

C01 Bianco / White



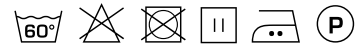
COD. Q3P00246

C07 Lilla chiaro / Light lilac



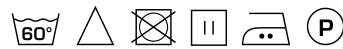
COD. Q3P00246

C09 Pistacchio / Pistachio



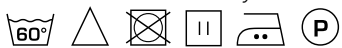
COD. Q3P00246

D24 Arancio / Orange



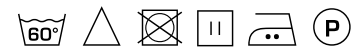
COD. Q3P00246

U38 Bluette / Royal



COD. Q3P00246

Z46 Fucsia / Fuchsia







health & wellness

Casacche donna

Women's tunics

CARMEN

Dettagli / Details

- Taschino sul petto
- 2 tasche
- Chiusura con zip rovesciata

- Breast pocket
- 2 pockets
- Inverted zip fastening

Taglie / Sizes

XS ÷ 3XL Slim Fit

COD. Q2K00238

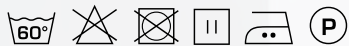
C01 Bianco / White

COD. Q2K00239

U32 Nero / Black

Tessuto / Fabric

100% poliestere
100% polyester
86 g / m²



BIONIC
FINISH[®] C₆

ULTRA
LIGHT



COD. Q2K00239

U32 Nero / Black

COD. Q2K00238

C01 Bianco / White

BIONIC
FINISH[®] C₆

ULTRA
LIGHT

MAURIZIO

Dettagli / Details

- Taschino sul petto
- 1 tasca
- Chiusura con zip rovesciata

- Breast pocket
- 1 pocket
- Inverted zip fastening

Taglie / Sizes

S ÷ 4XL Slim Fit

COD. Q2K00259

C01 Bianco / White

COD. Q2K00260

U32 Nero / Black

Tessuto / Fabric

100% poliestere
100% polyester
86 g / m²



COD. Q2K00259

C01 Bianco / White

COD. Q2K00260

U32 Nero / Black



health & wellness

Casacche donna

Women's tunics

ELEA

Dettagli / Details

- 2 tasche
- Bottoni a pressione
- Inserti in rete

- 2 pockets
- Press studs
- Network fabric panels

Taglie / Sizes

XS ÷ 3XL Slim Fit

COD. Q2K00230

C01 Bianco / White

COD. Q2K00231

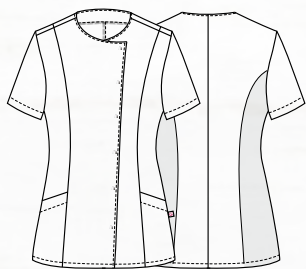
U32 Nero / Black

Tessuto / Fabric

65% poliestere 35% cotone

65% polyester 35% cotton

143 g / m²



COD. Q2K00231

U32 Nero / Black

COD. Q2K00230

C01 Bianco / White

PINES

Dettagli / Details

- 2 tasche
- Chiusura con zip rovesciata

- 2 pockets
- Inverted zip fastening

Taglie / Sizes

XS ÷ 3XL Slim Fit

COD. Q2K00255

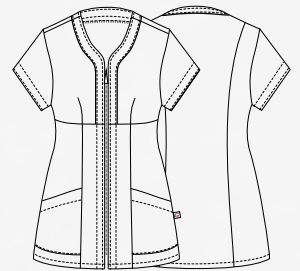
C01 Bianco / White

COD. Q2K00256

U32 Nero / Black

Tessuto / Fabric

65% poliestere 35% cotone
65% polyester 35% cotton
143 g / m²



COD. Q2K00255

C01 Bianco / White

COD. Q2K00256

U32 Nero / Black



health & wellness

Casacche donna

Women's tunics

SARA

Dettagli / Details

- 2 tasche
- Bottoni a pressione nascosti

- 2 pockets
- Hidden press studs

Taglie / Sizes

XS ÷ 3XL Slim Fit

COD. Q2K00236

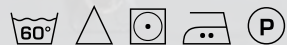
C01 Bianco / White

COD. Q2K00237

U32 Nero / Black

Tessuto / Fabric

65% poliestere 35% cotone
65% polyester 35% cotton
143 g / m²

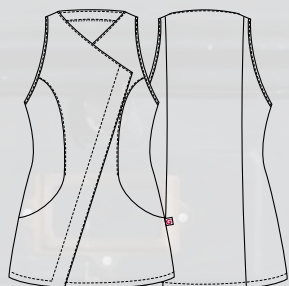
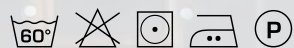


COD. Q2K00271

C04 Salmone / Salmon
C08 Azzurro chiaro / Light blue
M19 Verde acqua / Acqua green

Tessuto / Fabric

70% poliestere 30% cotone
70% polyester 30% cotton
132 g / m²



COD. Q2K00237

U32 Nero / Black



COD. Q2K00236

C01 Bianco / White



COD. Q2K00271

C04 Salmone / Salmon



COD. Q2K00271

M19 Verde acqua / Acqua green



COD. Q2K00271

C08 Azzurro chiaro / Light blue

ILARIA

Dettagli / Details

- Ampia tasca centrale
- Spacchetti sulle maniche

- Wide central pocket
- Vents on sleeves

Taglie / Sizes

XS ÷ 3XL Regular Fit

COD. Q2K00257

C01 Bianco / White

COD. Q2K00258

U32 Nero / Black

Tessuto / Fabric

65% poliestere 35% cotone
65% polyester 35% cotton
143 g / m²



COD. Q2K00257

C01 Bianco / White

COD. Q2K00258

U32 Nero / Black



CAMERON

Dettagli / Details

- 2 tasche
- 1 tasca sul retro
- Elastico e coulisse

- 2 pockets
- 1 rear pocket
- Elasticated waistband with drawstring

Taglie / Sizes

XS ÷ 3XL Slim Fit

COD. Q2P00240

C01 Bianco / White

Tessuto / Fabric

100% cotone
100% cotton
185 g / m²

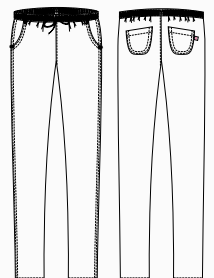


COD. Q2P00241

U32 Nero / Black

Tessuto / Fabric

65% poliestere 35% cotone
65% polyester 35% cotton
200 g / m²





DALLA FORESTA ALLA PRODUZIONE

Conosciute per il loro comfort naturale e per il processo di produzione rispettoso per l'ambiente, le fibre **TENCEL™** Lyocell offrono qualità, performance e versatilità. Proprietà fisiche uniche gli conferiscono alta resistenza, eccellente gestione dell'umidità e delicatezza sulla pelle.



PRODUZIONE SOSTENIBILE

Le fibre **TENCEL™** Lyocell si sono guadagnate la loro reputazione grazie al processo di produzione a ciclo chiuso rispettoso per l'ambiente, che trasforma la polpa del legno in fibra di cellulosa con alta efficienza delle risorse e un basso impatto ambientale.

La speciale fibra, di origine botanica viene estratta da legno proveniente da piantagioni forestali sostenibili, utilizzando un solvente riciclato quasi al 100%.

Grazie ai microscopici canali tra le singole fibre, **TENCEL™** assorbe fino al 50% di umidità in più rispetto al cotone, riducendo drasticamente la formazione di batteri. Lasciando la pelle piacevolmente asciutta e mantenendo il suo naturale equilibrio, questa fibra evita lo sviluppo di irritazioni.

I tessuti contenenti la fibra **TENCEL™**, sono caratterizzati da un'altissima stabilità dimensionale, si dimostrano **eccezionalmente forti e resistenti all'usura**, e sono adatti ai lavaggi industriali. Grazie all'insieme di queste eccellenti caratteristiche, **TENCEL™** può essere considerata la fibra del futuro.

FROM THE FOREST TO PRODUCTION

Known for their natural comfort and environmentally friendly production process, the **TENCEL™** Lyocell fibers offer quality, performance and versatility. Unique physical properties give it high strength, excellent moisture management and delicacy on the skin.

SUSTAINABLE PRODUCTION

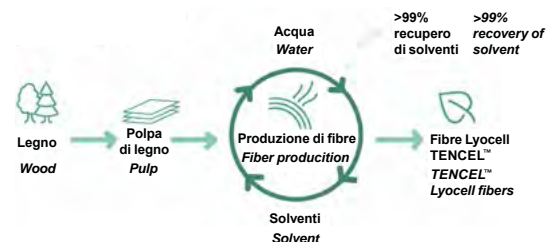
TENCEL™ Lyocell fibers have gained a commendable reputation for their environmentally responsible closed loop production process, which transforms wood pulp into cellulosic fibers with high resource efficiency and low ecological impact.

This special fiber, of botanic origin, is extracted from sustainable forests, using an almost 100% recycled solvent

Thanks to the microscopic channels between the individual fibers, **TENCEL™** absorbs up to **50% more of moisture than cotton**, reducing dramatically the growth of bacteria. Leaving the skin pleasantly dry and keeping its natural balance, this fiber prevents skin irritation.

TENCEL™ fibers are characterized by a very high dimensional stability, they prove to be **exceptionally strong and resistant to wear**, and are suitable for industrial washing. Thanks to all these characteristics, **TENCEL™** can be considered the fiber of the future.

TENCEL™ Lyocell fibers Processo di produzione / production process





Le fibre in **TENCEL™** Lyocell supportano le proprietà di regolazione della temperatura corporea attraverso la gestione dell'umidità.

***TENCEL™** Lyocell bers support body temperature regulating properties through their moisture management.*

Attraverso la gestione dell'umidità, le fibre di **TENCEL™** Lyocell assorbono l'umidità in modo efficiente: di conseguenza, le fibre di **TENCEL™** Lyocell forniscono un ambiente meno favorevole alla crescita batterica, offrendo migliori qualità igieniche.

*Through moisture management, **TENCEL™** Lyocell bers absorb moisture efficiently: consequently, **TENCEL™** Lyocell bers provide a less favorable environment for bacterial growth, offering better hygienic qualities.*



Le fibre in **TENCEL™** Lyocell supportano le proprietà di regolazione della temperatura corporea attraverso la gestione dell'umidità. Assorbimento e rilascio di umidità, contribuiscono alla traspirabilità del tessuto che supporta la regolazione termica naturale del corpo.

***TENCEL™** Lyocell bers support body temperature regulating properties through their moisture management. Absorption and release of moisture, contributing to fabric breathability that supports the body's natural thermal regulation.*

Le fibre di **TENCEL™** Lyocell sono naturalmente morbide al tatto, offrono un comfort duraturo e mostrano una superficie liscia, donando ai tessuti una sensazione morbida e garantendo comfort alle pelli sensibili.

***TENCEL™** Lyocell bers are naturally soft to the touch, offer long-lasting comfort and exhibit a smooth surface area, giving fabrics a soft feel and ensuring comfort for sensitive skin.*



Le fibre di **TENCEL™** Lyocell sono resistenti e godono di una lunga durata grazie alla loro maggiore resistenza tra le fibre di cellulosa.

***TENCEL™** Lyocell bers are versatile and distinguished by their high tenacity profile among cellulose bers.*

Tutte le fibre standard di **TENCEL™** Lyocell sono certificate come biodegradabili e compostabili in condizioni industriali, domestiche, del suolo e marine, quindi possono tornare completamente alla natura.

*Derived from nature, all **TENCEL™** standard Lyocell ber types have been certified as biodegradable and compostable under industrial, home, soil and marine conditions, thus they can fully revert back to nature.*



www.tencel.com

BIONIC-FINISH® C₆

È il primo sistema idrorepellente completo a livello mondiale per l'industria tessile.

It is the first complete water repellent system in the world for the textile industry.

BREVETTATO E SVILUPPATO PER CONFERIRE AI TESSUTI CARATTERISTICHE DI IDROREPELLENZA ALL'ACQUA, AGLI OLI E ALLE MACCHIE IN GENERALE.

Il **BIONIC-FINISH®** è ispirato alla pelle dello squalo che, contrariamente a quanto si pensi, non è liscia ma piuttosto ruvida e costituita da piccolissime scanalature longitudinali che lasciano passare l'acqua sul corpo in modo controllato, riducendone al minimo l'attrito. Grazie a questa speciale struttura, l'effetto pelle di squalo è stato implementato nei costumi da bagno per le competizioni ed è tra le scoperte più conosciute della bionica.

Il sistema **BIONIC-FINISH®** garantisce massima traspirabilità e consente al tessuto di mantenere una mano molto morbida, altissimo comfort, un'eccellente durata nel tempo e colori sempre nuovi e brillanti. Ma non è tutto: la composizione di questo agente impermeabilizzante offre il vantaggio di un'asciugatura estremamente rapida.

PATENTED AND DEVELOPED TO GIVE THE FABRICS WATER-REPELLENT CHARACTERISTICS TO WATER, OILS AND STAINS IN GENERAL.

The **BIONIC-FINISH®** is inspired by shark skin which, contrary to popular belief, is not smooth but rather rough and consists of very small longitudinal grooves that allow water to pass over the body in a controlled manner, reducing friction to a minimum. Thanks to this special structure, the shark skin effect has been implemented in swimwear for competitions and is one of the best known discoveries in bionics.

The **BIONIC-FINISH®** system guarantees maximum breathability and allows the fabric to maintain a very soft hand, very high comfort, excellent durability and always new and bright colors. But that's not all: the composition of this waterproofing agent offers the advantage of extremely fast drying.

BIONIC-FINISH® C₆

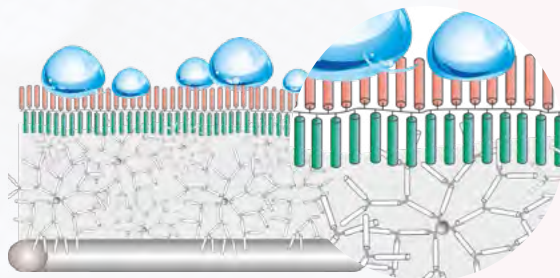
La nuova tecnologia **BIONIC-FINISH® C₆** a basso impatto di fluoro, per un futuro migliore!

*The new **BIONIC-FINISH® C₆** low impact fluoride technology, for a better future!*

Gocce d'acqua / Water drops
Fluorocarburi / Fluorocarbons
Catene di idrocarburi / Hydrocarbon chains

RUCOSTAR - **BIONIC-FINISH®**
Dendimedri / Dendrimers

Tessuto / Fabric



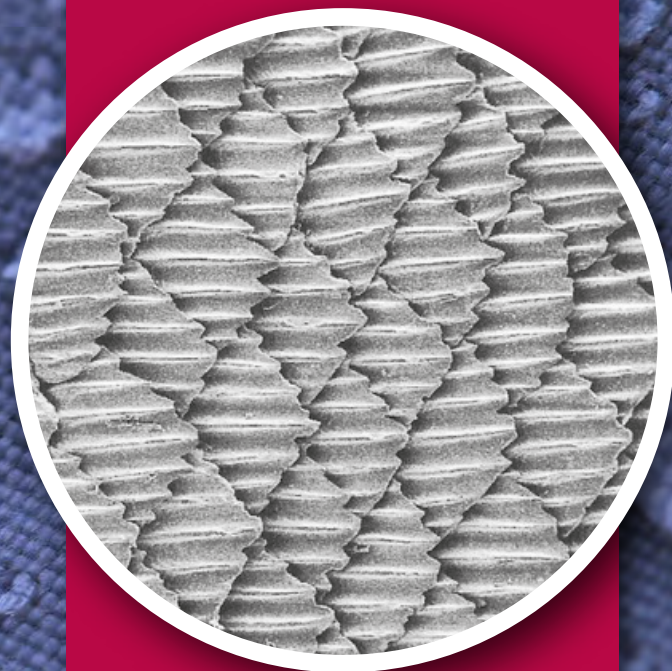
BIONIC
FINISH® C₆

BY RUDOLF GROUP

TRASPIRABILITÀ
BREATHABILITY

DURATA
DURATION

ASCIUGATURA RAPIDA
QUICK DRYING



I tessuti nel nuovo **BIONIC-FINISH® C₆** offrono una sensazione eccezionalmente morbida rispetto ai materiali trattati convenzionalmente.

*Fabrics made with the new **BIONIC-FINISH® C₆** offer an exceptionally soft feel compared to conventionally treated materials.*

BIONIC-FINISH® C₆

Idro-oleorepellente, massimo comfort
Hydro-oil repellent, maximum comfort

www.rudolf-group.com

SILVERPLUS®

Igiene, protezione e freschezza per i tessuti di domani: maggiore utilizzo, minor consumo di acqua.

Hygiene, protection and freshness for tomorrow's fabrics: greater use, less water consumption.

GRAZIE AL TRATTAMENTO ANTIBATTERICO SILVERPLUS®, I TESSUTI SONO IGIENIZZATI E PROTETTI DAGLI ODORI SGRADIEVOLI DEL CORPO.

Questo trattamento innovativo crea un deposito virtualmente infinito dal quale vengono liberati ioni d'argento positivi altamente efficaci in piccole quantità, esattamente dosati quando necessario, cioè in presenza di umidità.

Tessuti freschi anche a basse temperature di lavaggio. Sono necessarie quantità significative di energia per il lavaggio, l'asciugatura, la stiratura dei capi professionali ad alte temperature.

SILVERPLUS® è il rimedio: i consumatori risparmiano energia, denaro e contribuiscono alla protezione dell'ambiente.

THANKS TO THE SILVERPLUS® ANTIBACTERIAL TREATMENT, THE FABRICS ARE SANITIZED AND PROTECTED FROM UNPLEASANT BODY ODORS.

This innovative treatment creates a virtually infinite deposit from which highly effective positive silver ions are released in small quantities, exactly dosed when necessary, that is, in the presence of moisture.



FRESH FABRICS EVEN AT LOW WASHING TEMPERATURES.

Significant amounts of energy are required for washing, drying and ironing professional garments at high temperature.

SILVERPLUS® is the remedy consumers save energy, money and contribute to the protection of the environment.

Tessuto assorbi-sudore con sistema protettivo SILVERPLUS®, ottimale evaporazione dell'umidità sulla superficie del tessuto

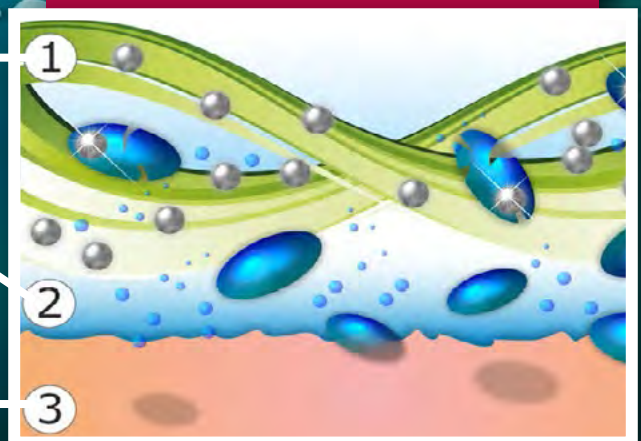
Sweat-absorbing fabric with SILVERPLUS® protective system, optimal evaporation of moisture on the surface of the fabric

Evaporazione dell'umidità tra pelle / tessuto

Evaporation of moisture between leather / fabric

Processo di produzione del sudore

Sweat production process



SILVER+

BY RUDOLF GROUP

Il tessuto trattato con **SILVERPLUS®** mostra una riduzione batterica del 99,9% dopo 100 cicli di lavaggio a 60° C e resiste anche al lavaggio a secco.

È stato dimostrato che l'uso di **SILVERPLUS®** non ha effetti negativi sull'ambiente.

- Resistente ai lavaggi, anche a secco
- Non altera il naturale equilibrio della pelle
- Non influenza lo spurgo biologico nel trattamento delle acque reflue

ANTIMICROBICO
ANTIMICROBIAL

EFFETTO FRESCHEZZA
FRESHNESS EFFECT

ECOLOGICO
ECOLOGICAL

The fabric treated with **SILVERPLUS®** shows a bacterial reduction of 99.9% after 100 washing cycles at 60 ° C and is resistant to washing and dry cleaning.

It has been shown that the use of **SILVERPLUS®** has no negative effects on the environment.

- Resistant to washing, even when dry
- Does not alter the natural balance of the skin
- Does not affect biological purge in wastewater treatment

Uomo / Man																	
S		M		L		XL		XXL		XXXL		4XL		5XL			
42	44	46	48	50	52	52	54	54	56	58	60	62	64				
Donna / Woman																	
XS		S		M		L		XL		XXL		XXXL		4XL		5XL	
40	42	42	44	44	46	48	50	52	54	54	56	58	60	62			
Donna / Woman																	
I		II		III		IV											
XS - S		M - L		XL - XXL		3XL - 4XL											
Camicie / Shirts																	
XS		S		M		L		XL		XXL							
35	36	37	38	39	40	41	42	43	44	45	46						

Le misure sopra riportate sono indicative in quanto possono variare a seconda del modello e della vestibilità, per motivi di modellistica e di attualità. *The above measures can change according to the different styles and for design reasons.*

CONSIGLI TECNICI

Per una buona durata dei capi sono consigliabili i seguenti accorgimenti:

- 1
Lavare i capi in acqua tiepida per almeno due volte prima di procedere con modifiche sartoriali.
- 2
Non lasciare i capi in ammollo.
- 3
Non é consigliabile usare prodotti chimici e in caso di necessità usare una modica quantità di candeggina (proporzione massima del 3%) solo su tessuti tinti in filo o color bianco. La ditta Giblor's si esonera da responsabilità per scolorimenti o usure dei tessuti, causati dall'uso improprio di eventuali prodotti chimici.
- 4
Per gli stampati non strofinare né spazzolare.
- 5
Il puro cotone prevede un ritiro del 3% massimo.
- 6
Per lo stiro attenersi alle basse temperature per i tessuti misti e sintetici; per il cotone, invece potranno essere usate temperature più elevate.
- 7
Mai procedere a smacchiature locali, pena il deterioramento dei tessuti.
- 8
I capi muniti di chiusura lampo vanno allacciati completamente prima del lavaggio in lavatrice.
- 9
Non porre mai a contatto la chiusura lampo con fonti di calore.

TECHNICAL ADVICES

For a well wearing of the clothes please read the following suggestions:

- 1
Wash the clothes in lukewarm water at least for two times before before proceeding with sartorial changes.
- 2
Never leave to soak.
- 3
If necessary, use a little quantity of bleach (maximum proportion of 3%) only for white and yarn dyed fabrics. Giblor's is not responsible for the fading or wear of the fabrics, due to an inappropriate use of chemical product.
- 4
For printed clothes do not rub and do not brush.
- 5
Pure cotton will have a shrinkage of max 3%.
- 6
How to iron: for the mixed and synthetic clothes use low temperature; for the cotton you can use higher temperature.
- 7
In order to avoid the deterioration of the fabrics, don't remove stains locally
- 8
Zip up all the clothes before washing them in the washing machine.
- 9
Never place the zip in contact with heat sources.



Lavaggio ad acqua / Water washing

La vaschetta è il simbolo grafico usato per le informazioni relative al lavaggio in acqua.
The basin is the symbol used for information relating to water washing.

 <p>Lavaggio delicato Gentle wash</p>	 <p>Lavaggio 30° / 40° / 60° / 95°. Wash 30° / 40° / 60° / 95°.</p>	 <p>Lavaggio a mano con temperatura massima di 40°. Il capo non deve essere strizzato. The garment must be hand-washed, the temperature must not exceed 40°C. The garment must not be wrung.</p>	 <p>Non lavare. Do not wash.</p>
--	--	---	---



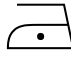


Candeggio / Bleaching

Il triangolo è il simbolo del candeggio al cloro.
The triangle is the chlorine bleaching symbol.

 <p>È permesso l'uso di qualsiasi candeggiante diluito al 3%. It is allowed the use of any bleach diluted to 3%.</p>	 <p>Non candeggiare. Do not bleach.</p>
---	--

Stiratura / Ironing

Il ferro da stiro è il simbolo relativo alle informazioni sulla stiratura. La temperatura ideale per ogni capo è indicata da punti neri riportati sul ferro.
The iron is the symbol used for information relating to ironing. The black dots indicate the suitable temperature.

 <p>Stiro temperatura massima 200° Max ironing temperature 200°</p>	 <p>Stiro temperatura massima 150° Max ironing temperature 150°</p>	 <p>Stiro temperatura massima 110° Max ironing temperature 110°</p>	 <p>Non stirare. Do not iron.</p>	 <p>Non stirare a vapore. Do not steam iron.</p>
--	--	--	--	---

Lavaggio a secco / Dry cleaning

Il cerchio è il simbolo grafico relativo al lavaggio a secco e i segni riportati all'interno indicano il tipo di solvente adatto al tessuto.
The circle is the dry-cleaning symbol and the signs on the inside indicate the suitable solvent-type.

 <p>Lavare a secco con qualsiasi solvente. Dry clean using any solvent.</p>	 <p>Lavaggio delicato a secco con qualsiasi solvente. Gentle dry clean using any solvent.</p>	 <p>Non lavare a secco. Do not dry clean.</p>
--	--	--

Asciugatura / Drying

I simboli dell'asciugatura sono rappresentati da un quadrato.
The drying symbols are represented by a square.

 <p>Asciugare a tamburo a bassa temperatura. Tumble dry low temperature.</p>	 <p>Non asciugare a tamburo. Do not tumble dry.</p>	 <p>Asciugatura verticale senza spremitura. Vertical drying without squeezing.</p>
---	--	---

- A** **ADRIANO** pag. 26
ALAN pag. 35 - 128
ALICE pag. 126 - 127
ALTEA pag. 110 - 111
ANCONA pag. 39
ANDY pag. 41
ATENE pag. 35
AUGUSTIN pag. 8 - 9
AURORA pag. 103
- B** **BANDANA** pag. 42 - 43
BARI pag. 39 - 72 - 73
BRUCE pag. 34
- C** **CALIFORNIA** pag. 64
CAMELIA pag. 108 - 109
CAMERON pag. 147
CAPPELLO SCUOLA pag. 40
CAPRI pag. 80 - 81
CARMEN pag. 140
CELINE pag. 10 - 11
COPPOLA pag. 89
COPRICAPO pag. 41
CRAVATTA DONNA pag. 89
CRAVATTA UNISEX pag. 89
- D** **DANA** pag. 92 - 94
DIONISIO pag. 14 - 15
DOUGLAS pag. 63
- E** **ELEA** pag. 142
ELIO pag. 93 - 95
ENRICO pag. 30 - 31 - 32
- F** **FARA** pag. 103
- G** **GABRIELE** pag. 124 - 125
GARY pag. 132 - 133
GIOVANNI pag. 93 - 95
GIOVE pag. 33
GIUNONE pag. 38
- I** **ILARIA** pag. 146
ISOTTA pag. 121
- J** **JASON** pag. 134 - 135
JERRY pag. 84 - 85
- K** **KANSAS** pag. 65
KLIMT pag. 40
- L** **LANZAROTE** pag. 44
LATINA pag. 82 - 83
LAYLA pag. 92 - 94
LIONE pag. 49 - 51 - 53
LIPARI pag. 74 - 75
LONDON pag. 37
LUNA pag. 62 - 67
- M** **MAGNOLIA** pag. 107
MANCHESTER pag. 62
- MATERA** pag. 39 - 70 - 71
MATTEO pag. 98
MAURIZIO pag. 141
MIGUEL pag. 96
MIKE pag. 120
MILENA pag. 130 - 131
MILLY pag. 120
MIMOSA pag. 107
MINORCA pag. 44
MONET pag. 40
- N** **NAPOLI** pag. 48 - 50 - 52 - 56 - 58 - 60
NIZZA pag. 66
NOAH pag. 34
NOVAK pag. 100
- O** **OMERO** pag. 38
ORTENSIA pag. 104 - 105
- P** **PANAREA** pag. 86 - 87
PAPILLON pag. 89
PARIGI pag. 36 - 37
PATRIZIO pag. 16 - 17 - 20
PIERO pag. 129
PINES pag. 143
PITAGORA pag. 136 - 137
PLUTONE pag. 28 - 29
POSITANO pag. 76 - 77
PRIMULA pag. 112 - 113
PRINCE pag. 102
PUB pag. 78 - 79
- R** **RAUL** pag. 22 - 23
RENO pag. 48 - 50 - 52 - 56 - 58 - 60
RICKY pag. 114 - 115
RODANO pag. 57 - 59 - 61
ROSITA pag. 97
- S** **SARA** pag. 144 - 145
SCOTLAND pag. 49 - 51 - 53
SENNA pag. 57 - 59 - 61
SHANNON pag. 63
STELVIO pag. 44
SUSI pag. 18 - 19 - 21
- T** **THIAGO** pag. 24 - 25
TOMMASO pag. 27
TOMMY pag. 89
TOQUE pag. 40
TORCIONE pag. 41
TRISTANO pag. 121
- U** **ULISSE** pag. 12 - 13
- V** **VENUS** pag. 101
VIOLA pag. 106
- Z** **ZAGABRIA** pag. 36 - 37
ZANTE pag. 68 - 69
ZEFIRO pag. 116 - 117
ZOCCOLO IN POLIURETANO pag. 45





SCOPRI LE COLLEZIONI SU ROSSINI1969.IT
VIEW COLLECTIONS ON ROSSINI1969.IT

All rights reserved. Rossini® is a registered trademark. Rossini® maintain exclusive property rights for the contents of this catalogue, and is protected under copyright law. You may not modify, publish, transmit, sell, copy or create extracts or distribute any part of the contents for commercial purposes.

rossini1969.it



ESSENTIAL
COLLECTION
by **Giblor's**
italian work*life* specialist

rossini.

Via Pastrengo, 7M/9
24068 Seriate (BG)
t. +39 035 312696
p.iva 01992400166
commerciale@rossini1969.it

Capitale sociale: Euro 28 Mln, interamente versati

